


RESEARCH LETTER

Open Access



Lung ultrasound can predict response to the prone position in awake non-intubated patients with COVID-19 associated acute respiratory distress syndrome

Sergey N. Avdeev^{*} , Galina V. Nekludova, Natalia V. Trushenko, Natalia A. Tsareva, Andrey I. Yaroshetskiy and Djuro Kosanovic

To the Editor,

Prone positioning (PP) is a well-known therapeutic strategy used in acute respiratory distress syndrome (ARDS). Several studies demonstrated positive effects of PP on oxygenation parameters in awake non-intubated patients with COVID-19-associated ARDS [1–3]. However, PP is not effective in every case. The pilot study by Elharrar et al. demonstrated a significant improvement of oxygenation parameters during PP in only 25% of the patients [3]. The results of previous studies highlighted heterogeneity of COVID-19-associated ARDS, which demands further studies of the predictors of PP effectiveness and indications for its use in COVID-19 patients. The main objective of our study was to evaluate whether the changes of lung aeration assessed by lung ultrasound (LUS) can predict the oxygenation response during PP.

This prospective cohort study was conducted in COVID-19 care units of two university-affiliated hospitals (Sechenov University) between April 8 and May 10, 2020. The study included spontaneously breathing patients with confirmed or suspected diagnosis of COVID-19, and bilateral changes detected by high-resolution computed tomography and $\text{PaO}_2/\text{FiO}_2 < 300$ mmHg.

The study included 22 COVID-19 patients. Median age was 48.5 (39.8–62.8) years, 16 were male, and the median body mass index was 28.7 (27.3–31.6) kg/m². The main co-morbidities were arterial hypertension (31.8%) and diabetes mellitus (18.2%). Sixteen patients (72.7%) received CPAP and 6 patients (27.3%) received oxygen therapy.

Sixteen of 22 patients (72.7%) responded to PP treatment with significant increase in $\text{PaO}_2/\text{FiO}_2$. At the same time, fewer patients had clinically significant improvement in dyspnea score—3 patients (13.6%) at 15 min in PP and 12 patients (54.5%) at 3 h in PP (Table 1). RR also significantly improved in responders.

Responders and non-responders demonstrated significant differences in disease duration (8.5 (5.0–10.8) vs. 13.0 (10.0–17.0) days of disease, $p=0.02$), no other differences in baseline clinical and laboratory parameters were observed. Three patients (all from non-responder group) were transferred to intensive care unit and then intubated, two of them died.

The patients who responded to PP had more pronounced disturbances of aeration in posterior regions (8.5 (7.3–9.8) vs. 6.0 (4.3–7.3); $p=0.006$) as reflected by greater LUS. The decrease of the total LUS score and LUS score of posterior regions was significantly greater in responders (5.0 (4.0–7.0) vs. 1.5 (1.0–3.0); $p<0.005$ and 4.0 (3.5–5.0) vs. 1.0 (0.0–1.0); $p<0.001$, respectively). The area under the receiver operating characteristic curve of posterior LUS score for the oxygenation response during

*Correspondence: serg_avdeev@list.ru
Department of Pulmonology, I.M. Sechenov First Moscow State Medical University (Sechenov University), Moscow, Russia



© The Author(s) 2021. **Open Access** This article is licensed under a Creative Commons Attribution 4.0 International License, which permits use, sharing, adaptation, distribution and reproduction in any medium or format, as long as you give appropriate credit to the original author(s) and the source, provide a link to the Creative Commons licence, and indicate if changes were made. The images or other third party material in this article are included in the article's Creative Commons licence, unless indicated otherwise in a credit line to the material. If material is not included in the article's Creative Commons licence and your intended use is not permitted by statutory regulation or exceeds the permitted use, you will need to obtain permission directly from the copyright holder. To view a copy of this licence, visit <http://creativecommons.org/licenses/by/4.0/>. The Creative Commons Public Domain Dedication waiver (<http://creativecommons.org/publicdomain/zero/1.0/>) applies to the data made available in this article, unless otherwise stated in a credit line to the data.

Table 1 Comparison of changes over time in respiratory variables in responders and non-responders

Parameters	Non-responders	Responders	p value
LUS (total aeration) score, baseline	18.5 (16.0–20.3)	17.5 (17.0–20.8)	0.97
LUS (total aeration) score, PP at 3 h	16.0 (14.5–18.8)	13.5 (12.3–14.0)	0.03
LUS (posterior segments) score, baseline	6.0 (4.3–7.3)	8.5 (7.3–9.8)	0.006
LUS (posterior segments) score, PP at 3 h	5.5 (4.0–6.0)	4.0 (4.0–5.0)	0.20
LUS (anterior segments) score, baseline	6.0 (5.3–7.5)	5.0 (4.0–5.0)	0.05
LUS (anterior segments) score, PP at 3 h	6.5 (4.3–7.3)	5.0 (4.0–6.0)	0.11
LUS (lateral segments) score, baseline	6.0 (4.8–7.5)	5.5 (4.0–6.0)	0.37
LUS (lateral segments) score, PP at 3 h	5.0 (4.5–7.3)	4.0 (3.0–5.0)	0.07
PaO ₂ /FiO ₂ at baseline	138 (113–177)	136 (118–172)	0.53
PaO ₂ /FiO ₂ PP at 3 h	148 (128–182)	181 (174–210)	0.03
PaCO ₂ at baseline	36 (34–41)	37 (34–40)	0.94
PaCO ₂ PP at 3 h	36 (34–40)	37 (35–38)	0.92
SpO ₂ /FiO ₂ at baseline	181 (176–228)	180 (177–211)	0.86
SpO ₂ /FiO ₂ PP at 15 min	183 (178–230)	190 (188–222)	0.07
SpO ₂ /FiO ₂ PP at 3 h	185 (178–224)	194 (193–233)	0.07
SpO ₂ /FiO ₂ supine at 15 min	182 (179–226)	188 (184–227)	0.08
SpO ₂ /FiO ₂ supine at 1 h	179 (176–226)	184 (182–215)	0.13
RR at baseline	23 (22–26)	24 (20–26)	0.91
RR PP at 15 min	22 (19–26)	21 (20–24)	0.65
RR PP at 3 h	21 (18–27)	19 (16–21)	0.08
RR supine at 15 min	23 (22–26)	20 (18–23)	0.02
RR supine at 1 h	24 (22–26)	23 (18–25)	0.29
HR at baseline	79 (72–93)	81 (79–94)	0.24
HR PP at 15 min	91 (73–100)	88 (76–98)	0.12
HR PP at 3 h	85 (79–97)	74 (70–91)	0.20
HR supine at 15 min	81 (76–88)	89 (80–97)	0.88
HR supine at 1 h	86 (75–104)	79 (74–88)	0.37
Dyspnea Borg at baseline	5 (3–6)	5 (3–6)	0.89
Dyspnea Borg PP at 15 min	4 (2–6)	4 (2–6)	0.95
Dyspnea Borg PP at 3 h	5 (3–7)	3 (2–4)	0.26
Dyspnea Borg supine at 15 min	4 (3–6)	3 (2–6)	0.43
Dyspnea Borg supine at 1 h	5 (4–6)	4 (2–5)	0.12

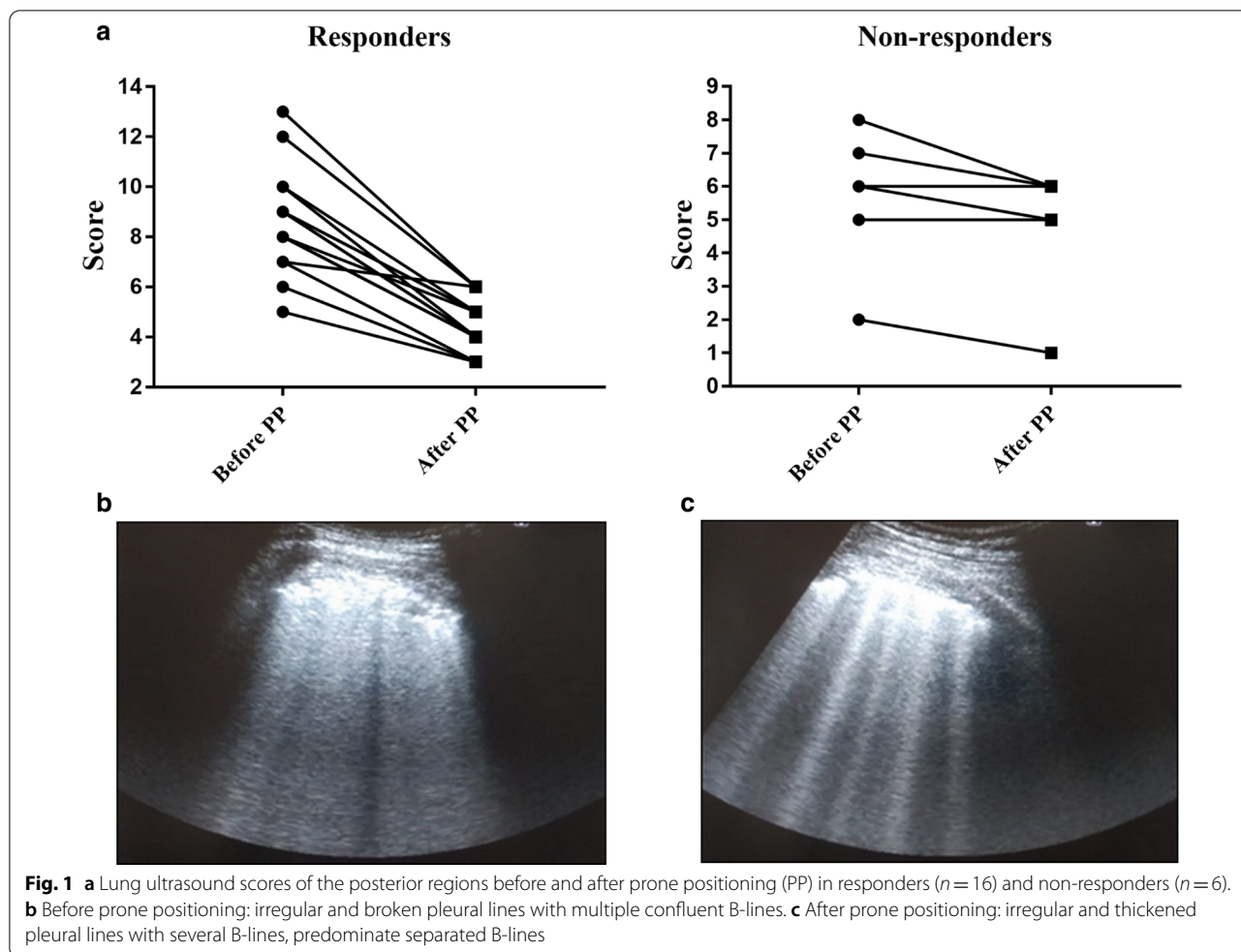
The study protocol included the measurement of SpO₂, respiratory rate (RR), heart rate (HR) and dyspnea assessment using Borg-Dyspnea-Scale (at baseline, after 15 min in PP, after 3 h in PP, 15 min and 1 h after turning in supine position). Arterial blood gas analysis was measured twice: at baseline and after 3 h in PP. The increase of PaO₂/FiO₂ by 20 mmHg in 3 h after turning a patient into the prone position was used as the criterion of the response to PP. All parameters of respiratory support and FiO₂ were the same during supine and prone positions. Before PP and after 3 h in PP semi-quantitative assessment of the lung tissue was performed by LUS. The study protocol included 14 areas for scanning (two anterior, two lateral and three posterior regions of each hemithorax) [4]

Data are expressed as median (inter-quartile range). PaO₂/FiO₂ (mmHg): arterial oxygen tension to inspired oxygen fraction ratio; PaCO₂ (mmHg): arterial carbon dioxide tension; SpO₂/FiO₂: arterial oxygen saturation to inspired oxygen fraction ratio; RR (min⁻¹): respiratory rate, HR (min⁻¹): heart rate; LUS: lung ultrasound; PP: prone position

PP was 0.87 (95% CI 0.64–1.0; $p < 0.01$). Changes of aeration score over time in posterior segments by LUS data correlated with PaO₂/FiO₂ changes ($r = 0.53$, $p = 0.01$), i.e. aeration improvement in posterior lung segments was associated with improved oxygenation status (Fig. 1).

Previous studies examined the changes of aeration by LUS in PP in intubated patients with ARDS not-associated with COVID-19 [5, 6]. Haddam et al. found that oxygenation response to PP was not correlated with a

specific LUS pattern regardless of the focal or non-focal nature of ARDS [5]. However, Wang et al. demonstrated that aeration score changes assessed by LUS were significantly higher in the PP responder and survivor groups [6]. Our study demonstrated in awake non-intubated patients with COVID-19-associated ARDS the relationship between the pattern of lung changes (presence of areas with subpleural consolidations), their localization



(posterior segments) as shown by LUS, and the response to PP.

In conclusion, in patients with severe COVID-19, response to PP probably depends on the extent and localization of lung tissue changes. The aeration changes assessed by LUS may be useful in prediction of oxygenation response to PP in awake non-intubated patients with COVID-19-associated ARDS.

Abbreviations

PP: Prone position; ARDS: Acute respiratory distress syndrome; PaO₂: Partial pressure of oxygen; FiO₂: Fraction of inspired oxygen; PaCO₂: Arterial carbon dioxide tension; SpO₂: Oxygen saturation; CPAP: Continuous positive airway pressure; RR: Respiratory rate; HR: Heart rate; LUS: Lung ultrasound.

Acknowledgements

None.

Authors' contributions

Concept and design of the study, and drafting of the manuscript: SNA; supervision and drafting of the manuscript: DK; performing the measurements and collection of data: GVN NVT NAT AIY. Transthoracic LUS was performed by two expert physicians (GVN, AIY) with expertise in LUS recording and interpretation. Double reading was conducted to reduce inter- and intra-observer

variability and final decisions were reached by consensus. Our physicians were blinded to the individual patients' oxygenation response. All authors were involved in data analysis and interpretation. Finally, all authors were involved in writing, reviewing and editing of the manuscript. All authors read and approved the final manuscript.

Funding

None.

Availability of data and materials

Data and materials can be obtained from the corresponding author upon the reasonable request.

Ethics approval and consent to participate

The local ethics committee (LEC No. 16-2016-20) approved the study. The ethics committee of the hospitals (Sechenov First Moscow State Medical University) waived the written informed consent from patients with COVID-19, and all the procedures being performed were part of the routine care.

Consent for publication

Not applicable.

Competing interests

The authors declare that they have no competing interests.

Received: 30 November 2020 Accepted: 13 January 2021
Published online: 25 January 2021

References

1. Coppo A, Bellani G, Winterton D, Di Pierro M, Soria A, Faverio P, et al. Feasibility and physiologic effects of prone positioning in non-intubated patients with acute respiratory failure due to COVID-19 (PRON-COVID): a prospective cohort study. *Lancet Respir Med*. 2020;8:765–74. [https://doi.org/10.1016/S2213-2600\(20\)30268-X](https://doi.org/10.1016/S2213-2600(20)30268-X).
2. Sartini C, Tresoldi M, Scarpellini P, et al. Respiratory parameters in patients with COVID-19 after using noninvasive ventilation in the prone position outside the intensive care unit. *JAMA*. 2020;323:2338–40. <https://doi.org/10.1001/jama.2020.7861>.
3. Elharrar X, Trigui Y, Dols AM, Touchon F, Martinez S, Prud'homme E, et al. Use of prone positioning in nonintubated patients with COVID-19 and hypoxemic acute respiratory failure. *JAMA*. 2020;323:2336–8. <https://doi.org/10.1001/jama.2020.8255>.
4. Soldati G, Smargiassi A, Inchingolo R, Buonsenso D, Perrone T, Briganti DF, et al. Proposal for international standardization of the use of lung ultrasound for patients with COVID-19 patients: a simple, quantitative, reproducible method. *J Ultrasound Med*. 2020;39:1413–9. <https://doi.org/10.1002/jum.15285>.
5. Haddam M, Zieleskiewicz L, Perbet S, Baldovini A, Guervilly C, Arbelot C, et al. Lung ultrasonography for assessment of oxygenation response to prone position ventilation in ARDS. *Intensive Care Med*. 2016;42:1546–56. <https://doi.org/10.1007/s00134-016-4411-7>.
6. Wang XT, Ding X, Zhang HM, Chen H, Su LX, Liu DW. Lung ultrasound can be used to predict the potential of prone positioning and assess prognosis in patients with acute respiratory distress syndrome. *Crit Care*. 2016;20:385. <https://doi.org/10.1186/s13054-016-1558-0>.

Publisher's Note

Springer Nature remains neutral with regard to jurisdictional claims in published maps and institutional affiliations.

Ready to submit your research? Choose BMC and benefit from:

- fast, convenient online submission
- thorough peer review by experienced researchers in your field
- rapid publication on acceptance
- support for research data, including large and complex data types
- gold Open Access which fosters wider collaboration and increased citations
- maximum visibility for your research: over 100M website views per year

At BMC, research is always in progress.

Learn more biomedcentral.com/submissions

