

RESEARCH

Open Access



Evidence for a causal link between sepsis and long-term mortality: a systematic review of epidemiologic studies

Manu Shankar-Hari^{1,2*†}, Michael Ambler^{1†}, Viyaasan Mahalingasivam¹, Andrew Jones^{1,2}, Kathryn Rowan³ and Gordon D. Rubenfeld⁴

Abstract

Background: In addition to acute hospital mortality, sepsis is associated with higher risk of death following hospital discharge. We assessed the strength of epidemiological evidence supporting a causal link between sepsis and mortality after hospital discharge by systematically evaluating the available literature for strength of association, bias, and techniques to address confounding.

Methods: We searched Medline and Embase using the following 'mp' terms, MESH headings and combinations thereof - sepsis, septic shock, septicemia, outcome. Studies published since 1992 where one-year post-acute mortality in adult survivors of acute sepsis could be calculated were included. Two authors independently selected studies and extracted data using predefined criteria and data extraction forms to assess risk of bias, confounding, and causality. The difference in proportion between cumulative one-year mortality and acute mortality was defined as post-acute mortality. Meta-analysis was done by sepsis definition categories with post-acute mortality as the primary outcome.

Results: The literature search identified 11,156 records, of which 59 studies met our inclusion criteria and 43 studies reported post-acute mortality. In patients who survived an index sepsis admission, the post-acute mortality was 16.1 % (95 % CI 14.1, 18.1 %) with significant heterogeneity ($p < 0.001$), on random effects meta-analysis. In studies reporting non-sepsis control arm comparisons, sepsis was not consistently associated with a higher hazard ratio for post-acute mortality. The additional hazard associated with sepsis was greatest when compared to the general population. Older age, male sex, and presence of comorbidities were commonly reported independent predictors of post-acute mortality in sepsis survivors, challenging the causality relationship. Sensitivity analyses for post-acute mortality were consistent with primary analysis.

Conclusions: Epidemiologic criteria for a causal relationship between sepsis and post-acute mortality were not consistently observed. Additional epidemiologic studies with recent patient level data that address the pre-illness trajectory, confounding, and varying control groups are needed to estimate sepsis-attributable additional risk and modifiable risk factors to design interventional trials.

Keywords: Sepsis, Mortality, Causality, Bias, Confounding factors (epidemiology)

* Correspondence: Manu.Shankar-Hari@kcl.ac.uk

†Equal contributors

¹Guy's and St Thomas' NHS Foundation Trust, ICU support Offices, 1st Floor, East Wing, St Thomas' Hospital, London SE1 7EH, UK

²Division of Asthma, Allergy and Lung Biology, Kings College London, London SE1 9RT, UK

Full list of author information is available at the end of the article



Background

Sepsis [1] is a global health care challenge [2]. Although acute mortality from sepsis in adults is improving [3], nearly a third of sepsis survivors are readmitted to hospital within 30 days of discharge [4–6], have a three-fold greater infection risk [7], and have persistently elevated markers of inflammation [8]. In a systematic review that included patients from both critical care (ICU) and non-ICU settings, sepsis was associated with impaired quality of life and increased long-term mortality [9].

However, outcomes after critical illness reflect a complex interplay between patient demographics, comorbidity, risk factors for critical illness, treatments in the ICU, and critical illness itself [10, 11]. Therefore, the poor outcomes observed in survivors of sepsis may be caused by sepsis or they may simply reflect events that would have occurred in these patients had they not become septic or had they been admitted to the hospital for reasons other than sepsis [10–14].

It is an important question, as a more comprehensive understanding of the causes and mechanisms of the post-ICU syndrome might inform more effective interventions. If post-sepsis long-term outcomes are primarily driven by the trajectory of pre-morbid conditions, then interventions targeted at complications attributed to critical illness may not be effective. Approaches to this question might take many forms including an analysis of biologic plausibility from animal studies of sepsis. Randomized trials that involve inducing sepsis are, of course, impossible in humans. Therefore we focused on observational studies of sepsis or cohorts derived from randomized trials. This study aims to systematically review the existing epidemiologic literature to specifically assess how a causal link between sepsis and mortality after hospital discharge is addressed, by evaluating the available literature for strength of association, impact of bias, and techniques to address confounding, to determine if increased long-term mortality reported after sepsis is caused by sepsis.

Methods

Approach

The standards for causal inference from observed associations in epidemiology are well-established [15–17]. These include associations that are strong and independent of bias or confounding, consistent across studies, specific to the exposure, demonstrate an increasing risk of the outcome with higher levels of exposure (dose-response), and are biologically plausible [14, 18]. We evaluated the extent to which studies fulfilled these criteria using the following framework. First, we separated the cumulative long-term mortality in to its components of acute and post-acute mortality. The causal effects of sepsis on acute mortality are well-described. As

cumulative long-term mortality incorporates acute mortality, an evaluation of the long-term effects of sepsis must isolate its unique effects on post-acute mortality from its effects on acute mortality. Second, the study design and analytic approach to confounding and bias were measured. This included whether patients were lost to follow up and the use of restriction, matching, stratification, and regression. We evaluated which variables the authors used as potential confounders. Third, as design and analytic approaches to confounding may be insufficient, we looked for the type and number of control populations included to minimize bias in the comparison and to clarify whether the outcomes following sepsis exposure were specific or merely a reflection of survival from critical illness. Finally, we assessed whether studies evaluated a dose-response relationship between sepsis and post-acute mortality, with the hypothesis that more severe sepsis, for example, septic shock, should be associated with higher post-acute mortality within a study and there should be an inverse relationship between acute mortality and post-acute mortality between studies.

Information sources

A systematic review of non-randomized and randomized clinical studies indexed within the Medline and the Embase databases were performed using the Ovid platform. Search terms included the following 'mp' terms, medical subject headings (MESH) and combinations thereof - sepsis, septic shock, septicemia, outcome, quality of life, cohort studies, and randomized controlled trials. The following limits were applied: humans, English language and publications since 1992. Subject headings were *exploded* and mapped to the appropriate MeSH. The search was restricted to English language articles published in or after 1992, when the first consensus definitions were introduced [19]. The full electronic search strategy for Medline is presented in electronic supplementary material (Additional file 1: Table S1).

Eligibility criteria for full text review

We included studies in adult patients reporting an episode of sepsis defined using either the 1992 [19] or the 2003 [20] consensus definitions with the following mandatory criteria: (1) the studies must report all-cause one-year or longer mortality and (2) must report the consensus definition components that could be assessed. In our search strategy we included studies reporting quality of life or cognitive outcomes on post-discharge follow up and initial full text review to identify studies that reported long-term mortality as one of the secondary outcomes. To generate a more homogenous sepsis population, we excluded studies exclusively reporting pediatric patients, patients with retroviral disease or

cancer, other specific cohorts such as immune-compromised patients, and obstetric cohorts.

Study selection for evidence synthesis

Two authors (MA and VM), using predefined inclusion criteria based on review of the titles and abstracts, performed independent assessment of studies identified within the literature search. Consensus was reached on the inclusion of studies after independent review of the studies (by MSH) and by mutual agreement of the reviewers. In order to avoid including the duplicate data where multiple articles were found that presented data from the same cohort of patients, the most relevant article was chosen by consensus (MA and MSH). To obtain the full text of the included studies, the authors were contacted if it was not possible to obtain from existing databases ($n = 1$) [21].

Data collection process and items

Two authors (MA and MSH) extracted data from the included studies and issues of uncertainty were resolved by consensus. From each of the included studies we extracted the following data to explore generic and study-specific quality checklists. The generic quality checklist included variables to inform a modified Newcastle-Ottawa score (NOS): study years (recruitment), country, single or multi-center, study design, number of patients, duration of follow up, evidence of selection bias at enrollment, proportion of patients lost during follow up, loss during follow up explained and key outcomes reported (Additional file 1: Table S2). The study-specific quality checklist included variables to assess (1) baseline risk of death (age, sex, comorbidity score or index, or pre-sepsis functional status, or comorbidity type); (2) acute illness risk of death (severity of illness score or a surrogate); (3) description of sepsis (definition, sepsis categories); (4) approach to bias; (5) approach to confounding; (6) separation of mortality endpoints to address post-acute mortality; and (7) use of non-sepsis control groups for comparisons.

Outcome definitions

In this study, acute mortality refers to hospital mortality during the index sepsis admission episode (28-day or ICU mortality was used when hospital mortality was not reported). Cumulative one-year mortality refers to the total reported mortality at one year. The primary study outcome was post-acute mortality, which we defined as the difference between cumulative and acute mortality (Fig. 1).

Description of bias assessment

In addition to the bias assessments described in the generic quality checklist (Additional file 1: Table S2), descriptions of setting and data source were used to

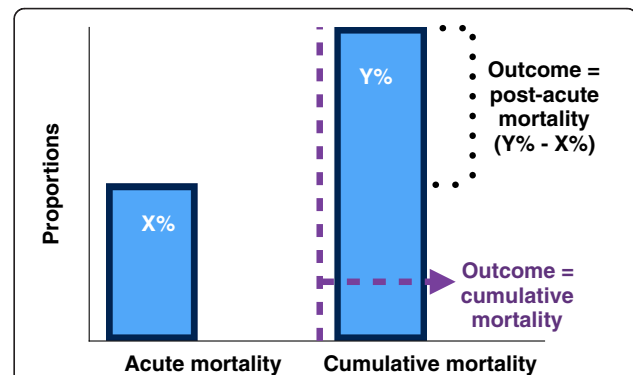


Fig. 1 Approach to the study question. Post-acute mortality was estimated as the difference between one-year mortality and acute mortality, to address the study questions as described (see “Methods”, “Approach”). We assessed whether the studies used cumulative mortality or post-acute mortality in regression models. This was done to identify risk factors that are associated with post-acute mortality, which will help future researchers delineate modifiable risk factors. This approach helps to generate a summary estimate of post-acute mortality and also explores the relationship between acute mortality and post-acute mortality at cohort level

assess the accuracy of exposure (sepsis) and information bias. To assess the risk of bias from loss to follow up, we collected data on completeness of follow up and how the primary outcome of interest (post-acute mortality) was ascertained. We coded the risk of ascertainment bias as low and follow up as complete, if the studies used either national/regional databases or by direct contact with the patient/family.

Description of confounding assessment

The study design and analytic methods used to address confounding in studies were categorized as restriction, matching, stratification, and regression. Restriction as a method to reduce confounding was defined either as use of specific sepsis/infection populations or as use of any additional criteria to specifically influence the relationship between sepsis and post-acute mortality (for example, when only patients with no comorbidities were included in an analysis). Matching was coded as yes if performed either at study design or during analysis. Stratified analysis was coded as yes if the studies report mortality stratified on predictor variables. Any use of multivariate regression to examine mortality or survival time was coded. We evaluated regression models separately depending on whether they used post-acute, or cumulative mortality as the outcome variable. The sepsis case definition was categorized as either consensus based, or modified from consensus definition, or other.

Statistics

We calculated the difference in proportion between cumulative one-year mortality and acute mortality. This

post-acute mortality rate and the cohort size were used to estimate the number of post-acute deaths. Random effects meta-analysis was done to generate summary post-acute mortality estimates. A contour-enhanced funnel (confunnel) plot was used to assess publication bias [22]. The distributions of statistical significance in the confunnel plot are derived from the Wald statistic for the effect estimate of each study, with asymmetry implying potential publication bias. Egger's test for small-study effects was done, which regresses the standard normal deviate of the study effect estimate against its standard error. The dose-response effect refers to an increase in the risk of adverse outcomes with increase in severity of sepsis. If a cohort has high acute mortality, the survivors may or may not have higher post-acute mortality. An aaplot was used to estimate this dose-response relationship between acute mortality and post-acute mortality [23]. Finally, we performed two sensitivity analyses using random effects meta-analysis of post-acute mortality by including only studies with an NOS score ≥ 5 , as a surrogate for high study quality and by the acute-mortality time point reported. All analyses were done using Stata/MP 13.1 StataCorp College Station, TX, USA.

Results

Study selection

The literature search identified 11,156 records. Following exclusion of duplicates, and title screening, there were 5,109 abstracts to screen. Following abstract screening, 75 articles met the criteria for full text evaluation. We excluded a further 26 articles reporting quality of life and/or follow-up mortality for less than one year ($n = 24$) and 2 studies using data from the same cohort. Ten additional studies were identified from the reference scan of the 49 studies that were included from full text review. Thus, 59 studies were included for qualitative review. Amongst these two studies did not report mortality data [24, 25], post-acute mortality could not be estimated from three further studies [26–28], and one study did not report the duration of follow up [21]. Thus, 53 studies were included for quantitative review, of which 43 studies contained sufficient data to estimate one-year post-acute mortality. Ten studies that report 2-year to 10-year mortality were excluded from quantitative review [11, 29–33], but were included for information in answering other questions. Only 16 studies included control arms so that the causal effects of sepsis on post-acute mortality could be assessed [7, 25, 30–43]. (Fig. 2; Table 1; Additional file 1: Table S3–S4).

Post-acute mortality

The mean (95 % CI) one-year post-acute mortality estimated from 43 studies using random effects

meta-analysis was 16.1 % (14.1, 18.1 %) with significant heterogeneity ($I^2 = 98.9$ %; $p < 0.001$) (Fig. 3). The one-sided confunnel plot shows asymmetry, which could be interpreted either as implying potential publication bias or as consistent results across studies supporting causality (Fig. 4a). There were no statistically significant small-study effects (Egger's test $p = 0.883$; Additional file 1: Table S5). Studies that included patients with higher mortality in acute sepsis did not demonstrate lower mortality in the post-acute period from a shift in the timing of death (Fig. 4b). Most studies report patient cohorts prior to 2005 (Fig. 3). In sensitivity analyses, the post-acute mortality (reported as mean (95 % CI)) were consistent with primary analysis (in high quality studies ($n = 33$), mean = 16.3 % (13.6–19.0 %); $I^2 = 98.6$ %; $p < 0.001$, in studies reporting hospital mortality ($n = 23$), mean = 16.6 % (13.5–19.6 %); $I^2 = 99.0$ %; $p < 0.001$, and in studies reporting 28- or 30-day mortality ($n = 20$), mean = 15.8 % (14.1–17.4 %); $I^2 = 93.3$ %; $p < 0.001$).

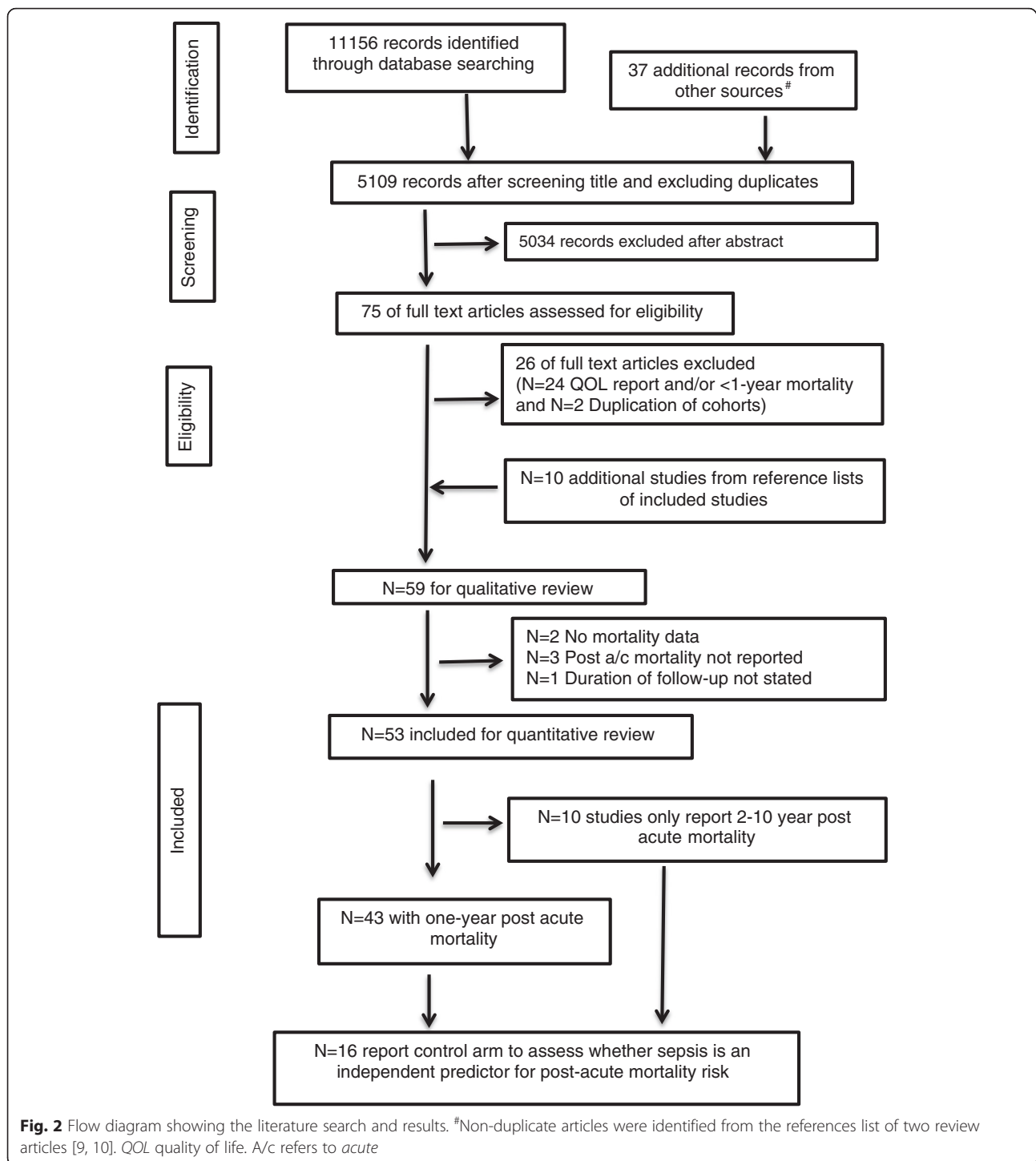
Bias assessment

The risk of bias in the included studies was variable, with asymmetric NOS distribution (Table 1; Additional file 1: Table S3; Additional file 1: Figure S1). Consensus criteria were the most commonly used case definitions. Case identification was often retrospective, thus in these cases there was potential for information bias secondary to accuracy of exposure. RCTs are likely to have the least risk of information/exposure ascertainment bias. National or regional databases (with or without contact with the family) were used by most studies to ascertain post-acute mortality, implying this would not be a major contributor to bias. Overall risk of bias and quality assessed using modified NOS score variables highlighted 10 studies with high risk of bias/poor quality (NOS score < 5 ; Additional file 1: Figure S1 and Additional file 1: Table S3).

Confounding assessment

Confounding in the relationship between sepsis and post-acute mortality potentially occurs when risk factors or confounding variables are distributed unequally between survivors and non-survivors. Studies without control groups cannot answer the causal question, but inform the reasons for the variability observed in studies.

The definitions for patient inclusion criteria in the studies could be categorized into five groups (pneumonia, consensus sepsis based definitions and modifications thereof, consensus sepsis definitions but pathogen identification mandated in the inclusion criteria, claims/ICD codes for sepsis, and peritonitis cohorts (Table 1). There was significant heterogeneity in post-acute mortality



within these categories ($p < 0.001$). In five studies restricted to patients with septic shock, the post-acute mortality varied between 7.0 % and 21.1 % [44–48]. Similar variations in the relationship between sepsis and post-acute mortality were observed in studies limited to elderly populations [11, 24, 25, 38, 40, 41, 49], a

southern US cohort aged 45 years or older [50], male patients [39], obese patients [51], and in a separate analysis restricted to a previously healthy population [37]. This implies, the determinants of the relationship between sepsis and post-acute mortality are unclear, thus, key restriction variables need to be ascertained.

Table 1 Assessment of study quality, risk of bias, and confounding

Methodological assessment summary (N=59 studies)	%*
1. Exposure definition (sepsis)	
i) Consensus [7, 8, 28–32, 35, 37, 39, 40, 44, 45, 47–50, 63–74]	49 %
ii) Claims/ICD codes [11, 24–26, 38, 41, 58, 75–77]	14 %
iii) Pathogen-plus (either positive blood culture or pathogen specified) [27, 34, 36, 46, 53, 78–81]	20 %
iv) Pneumonia [33, 40, 42, 43, 52, 82–85]	15 %
v) Peritonitis [21, 51, 86]	5 %
2. Ascertainment of exposure	
i) Claims/ICD codes data	13 %
ii) Randomized controlled trial cohorts [44, 45, 63, 66, 69, 70]	10 %
iii) Non-interventional study cohorts	75 %
3. Selection of the control cohort	
i) Drawn from ICU patients without sepsis	
a. Matched [35]	2 %
b. Not matched [7, 25, 30–32, 37, 41]	12 %
ii) Drawn from hospitalized infected patients (not ICU)	
a. Matched	
b. Not matched [30, 41]	3 %
iii) Drawn from hospitalized non-infected patients (not ICU)	
a. Matched [36]	2 %
b. Not matched [30, 34, 38–41]	10 %
iv) Population controls	
a. Matched [30, 33, 37, 41–43]	10 %
b. Not matched [40, 41]	3 %
v) No control cohorts/no controls for mortality comparison	73 %
4. Comparability of cohorts on the basis of design or analysis	
i) Regression models to adjust for confounders	
a. Regression models in studies reporting control population	
- Post-acute mortality [7, 25, 30, 33–37, 39, 42]	16 %
- Cumulative mortality	
- Stratified analysis for post-acute mortality [32, 40, 42, 43]	5 %
- Non-mortality outcome models [31, 38, 41]	5 %
b. Regression models using in studies with no controls	
- Post-acute mortality	22 %
- Cumulative mortality	20 %
- No mortality model	31 %

Table 1 Assessment of study quality, risk of bias, and confounding (*Continued*)

ii) Studies reporting sepsis dose-response [39, 46, 49, 52, 53]	9 %
5. Assessment of post-acute mortality	
i) Record linkage with national or regional databases or outcome assessed by contact with patient or relatives	90 %
ii) No description	10 %
6. Adequacy of follow up	
i) Complete follow up, all participants accounted for	22 %
ii) Loss to follow up unlikely to introduce bias (<20 % loss, or >20 % but those lost described and unlikely to be different from those followed)	61 %
iii) Follow up <80 % and no description of those lost	3 %
iv) No statement	14 %
7. Report both acute and post-acute mortality (or that information can be determined from the reported data)	
i) At one year	72.9 %
ii) Between 2 and 10 years [11, 29–32]	8.5 %
iii) No mortality data/post-acute mortality not estimable/follow-up time unclear [21, 24–28]	10.2 %

*Reported proportions (%) corrected to nearest whole number. Study quality and risk of bias was assessed on selection, comparability, and reported outcomes using the Newcastle Ottawa Score checklist (Additional file 1: Table S2). Sepsis case definition evaluates the representativeness of the cohort and ascertainment of exposure by assessing concordance with the sepsis definitions to the definition of Bone et al. [19] or Levy et al. [20]. Studies reporting data from randomized controlled trials (RCTs) are likely to have a lower score as non-sepsis controls are not evaluated

Studies reporting controls

There were 16 studies that included control groups to evaluate the effects of sepsis on post-acute mortality; 7 studies used the general population [30, 33, 37, 40–43], 13 used hospitalized controls (ICU, infected patients, and non-infected patients) [7, 25, 30–32, 34–41], and 4 studies used both [30, 37, 40, 41]. From these studies we evaluated whether sepsis is an independent risk factor for post-acute deaths and what other independent predictor variables were associated with post-acute mortality in sepsis patients (Additional file 1: Table S3, S4 and S6; Fig. 5a-d)

Studies reporting general population controls

In age- and sex-matched life-table data comparisons, post-acute mortality in pneumonia cohorts was two [43] to six times [33] higher than in the general population. Interestingly, when the age-, sex- and race-matched comparisons were stratified by comorbid status, the significant post-acute mortality risk

Random effects meta-analysis of post acute mortality

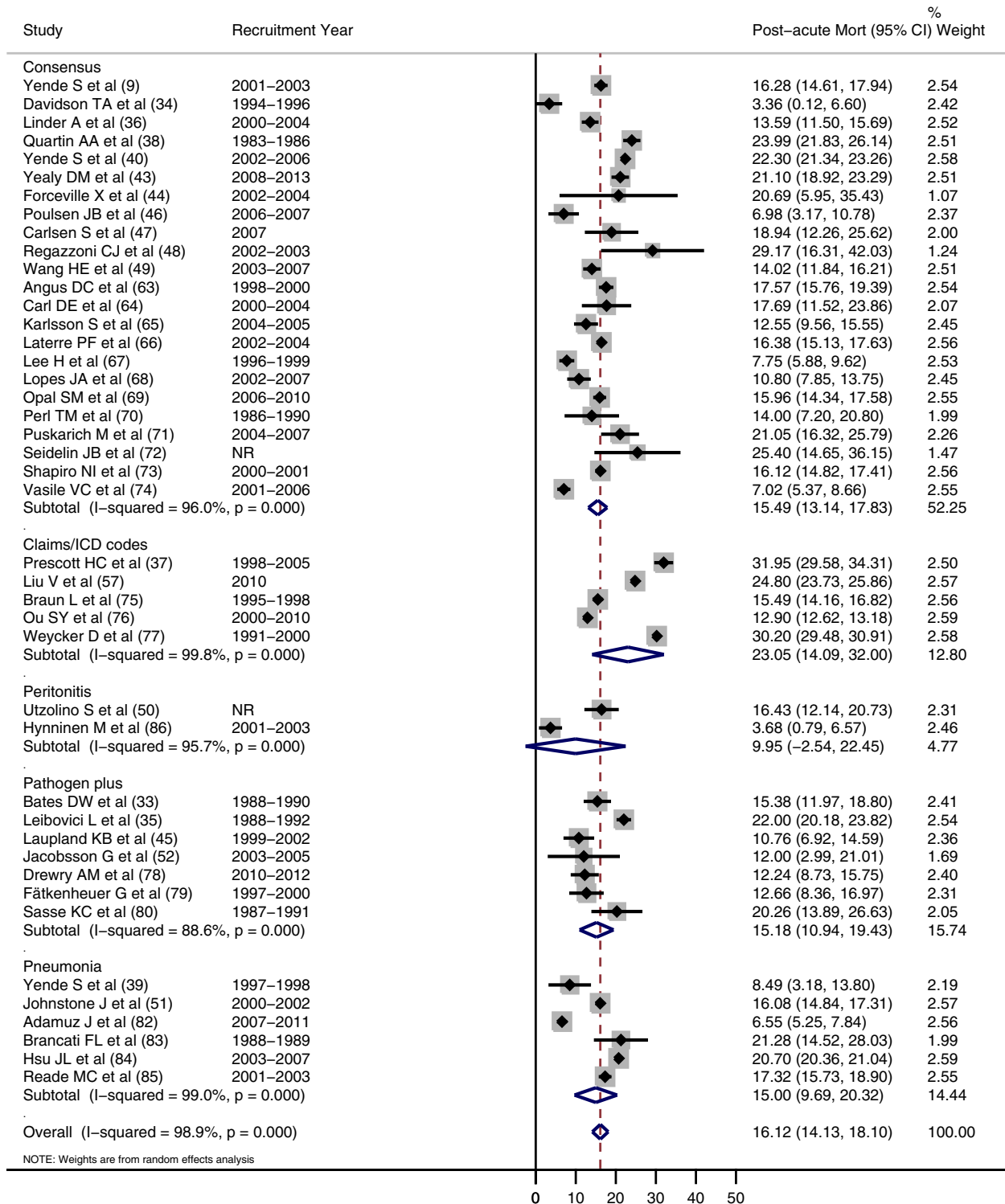


Fig. 3 Random effect meta-analysis of post-acute mortality. First author, reference number and cohort recruitment year for each study are shown. X axis indicates mortality proportions. NR not reported, Recruitment Year refers to recruitment window reported in studies

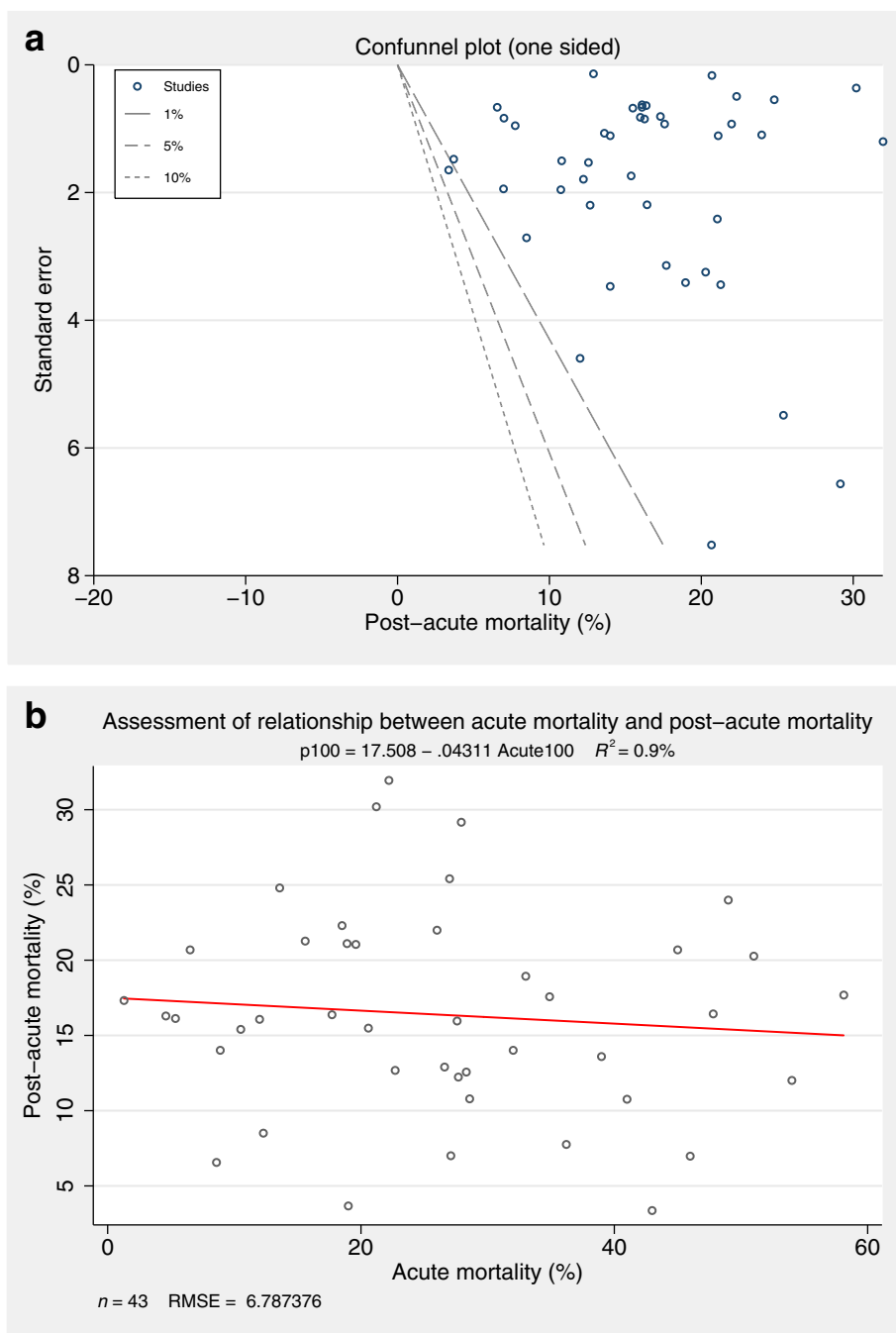


Fig. 4 a One-sided contour-enhanced funnel (confunnel) plot. The figure either implies potential publication bias or consistency in results (implying causality) across the published studies identified by this systematic review. The confunnel plot adds contours of statistical significance to the standard funnel plot and assesses whether the areas where studies are potentially missing correspond to areas of low statistical significance, the assumption being that studies that do not attain statistical significance boundaries are less likely to be published. **b** Post-acute mortality versus acute mortality with linear fit superimposed and assessed between study dose-response effects. The equation, R-square statistics of the fit, the sample size and root mean square standard error (RMSE)(s) are also shown (referred to as aaplot and designed by Nicholas J. Cox)

seen in young patients with pneumonia remained in those with comorbidity and was no longer statistically significant in those without comorbidities, implying that the crude effects were likely

attributable to age and comorbidity [42]. Sepsis cohorts requiring ICU care also have two- to five-fold higher risk of post-acute death than the general population [30, 36, 37, 39, 41].

Studies reporting hospital controls

The unadjusted post-acute mortality for severe sepsis when compared to hospitalized controls was no longer significantly different when adjusted for confounders such as age and comorbidities [30]. Amongst eleven studies with non-sepsis controls, six studies include sepsis as an exposure within regression models to evaluate the independent effect of sepsis on post-acute mortality. Sepsis was an independent predictor in four studies [25, 35, 37, 39]. Sepsis ceases to be an independent predictor of post-acute mortality as the comparator group severity of illness increases from hospitalized non-infected to ICU non-sepsis (Fig. 5b-d) [7, 25, 30–41]. The common non-sepsis predictor variables in the regression models from these eleven studies were age ($n = 8$) and comorbidity ($n = 8$).

Dose-response effect of sepsis on post-acute mortality

We observed an inconsistent sepsis–post-acute mortality dose-response effect in studies. The post-acute risk of death increases with worsening pneumonia [52] and with sepsis severity [39, 49]. Unexpectedly, septic shock was associated with a significant reduction in post-acute hazard ratio (0.77 (0.68–0.86); $p < 0.001$) [46], whilst sepsis was associated with higher post-acute mortality than severe sepsis (17.8 % vs. 14.0 %) [53] again highlighting the importance of *baseline-risk* factors on post-acute deaths amongst sepsis survivors.

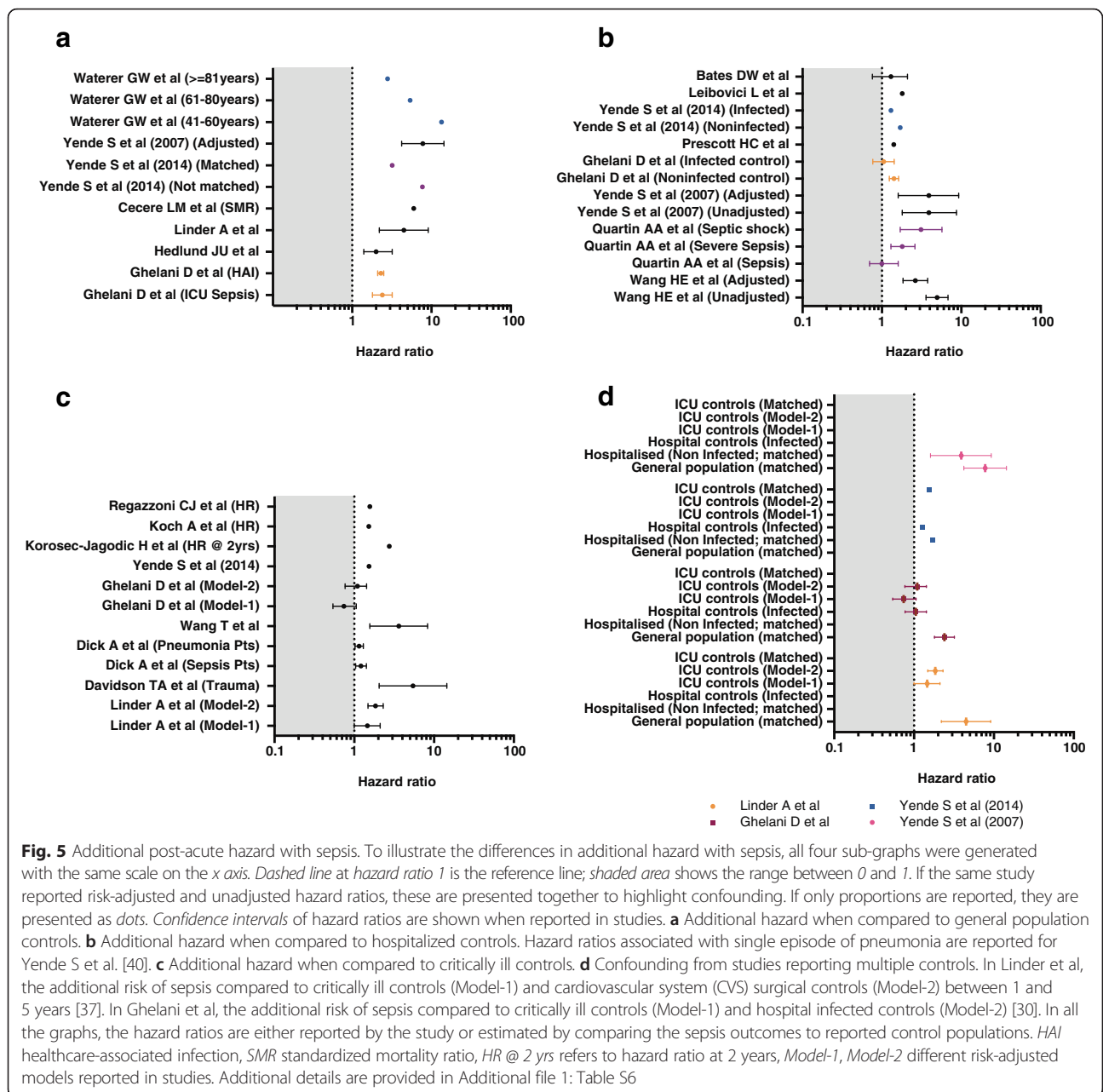
Discussion

The main finding of this systematic review is that an additional 16.1 % of deaths among patients admitted with acute sepsis occur between hospital discharge and one year in patients who survive an index admission with sepsis (post-acute mortality). Post-acute mortality was identified in studies using national databases and loss to follow up at one year was low, implying a lower risk of ascertainment and information bias. In studies that assess whether sepsis is an independent predictor of post-acute mortality, the magnitude of additional risk attributable to sepsis was inconsistent. Even in studies with low risk of bias, the limited reporting of sepsis subgroups precludes generating summary assessments. Common predictors of post-acute mortality were age and comorbidity. Studies that assessed the effect of sepsis on post-acute mortality with multiple control populations highlight the potential for confounding in the studies that either do not use controls or report unadjusted data for the relationship between sepsis and post-acute mortality (Fig. 5). In studies that report control populations, comorbidity, male sex, baseline functional status and acute severity of illness were highlighted as potential factors influencing the relationship between sepsis and post-acute mortality.

The key strengths of our systematic review include limiting the study population to adult sepsis cohorts and limiting the outcome to mortality. We separated cumulative long-term mortality into its two components, which address importantly different hypotheses. A customized NOS checklist enabled us to assess potential for bias in the ascertainment of exposure and outcome in addition to how included studies addressed confounding. We also used accepted criteria to assess causality in these studies [14, 18].

There are limitations to this systematic review. To address our study question, we defined long-term outcome as one-year mortality and excluded studies reporting shorter post-discharge outcomes. As this was a systematic review we were limited to the available studies, many of which included patient cohorts studied prior to 2005. It is possible that recent trends in acute mortality from sepsis might mean that appropriately performed studies would uncover a persuasive causal link between sepsis and post-acute mortality. This could occur if patients who would have died from sepsis in past years now survive to hospital discharge and now succumb to sepsis-specific morbidity in the post-acute phase. A similar issue limits the analysis of the dose-response effect of sepsis on post-acute mortality. If more severe forms of sepsis increase acute mortality, any effect on post-acute mortality will not be seen. The studies had limited access to comorbidity and many factors were not accounted for, including the trajectory of prior hospitalizations, nutritional status, discharge location, and family support. However, given the direction of the effects of confounding it is likely that more accurate recording of confounders would further blunt any independent associations between sepsis and post-acute mortality. There is related literature outside the remit of this systematic review, reporting the independent impact of acute respiratory distress syndrome (ARDS) on long-term outcomes [54, 55]. However, pneumonia and extrapulmonary sepsis account for nearly 75 % of the ARDS cohort in the recently published LUNG-SAFE observational study [56], implying potential utility of our review to this population. Finally, although our analysis argues against outlier effects from small studies, we cannot exclude the possibility that larger cohorts could identify a smaller effect of sepsis on post-acute mortality.

A systematic review of long-term outcomes from sepsis has been published previously [9], and whilst there are similarities to our review there are a number of key differences. First, we defined and evaluated post-acute mortality at one year. Second, we focused on evaluating the potential causality relationship between sepsis and post-acute mortality. Third, we specifically assessed risk of bias in studies, beyond generic quality checklists. Fourth, to answer the causality question, we identified key



confounders, risk of confounding, and methods used to address confounding in studies. Fifth, by fixing the outcome of interest as one-year post-acute mortality, we were able to perform random effects meta-analysis and explore publication bias whilst taking study quality into account [22].

Our systematic review highlights the need for a more coherent approach to understand the true magnitude of the additional, independent, and potentially modifiable impact of sepsis on post-acute mortality. First, the baseline risk variables could be categorized into fixed risk factors (e.g., age, sex, and race), and modifiable risk factors (e.g., comorbidities). Different comorbidities may

have a different impact on outcomes and comorbidities themselves may progress following acute insults [10, 13]. The health status trajectory prior to the acute illness trajectory is an important determinant that needs to be accounted for in future studies [24]. Thus young, previously healthy population without comorbidities is an important subset to study in addition to the more common older population with pre-existing comorbidities. Second, index sepsis admission is often followed by readmission(s), which may impact on one-year survival [57]. This readmission is often related to infection [4, 7, 58], which highlights the need for basic science and translational research into the contributing mechanisms. Third, the duration of modifiable

higher risk needs to be explored. There may be a therapeutic window to potentially deliver enhanced post-acute care and a novel window for trials of new interventions. Frailty occurs in patients with sepsis and in sepsis survivors [24, 59, 60]. Therefore, future studies should aim to document the influence of the pre-illness trajectory and post-acute survival time on the progression of underlying comorbidities and frailty [10, 13]. Researchers need to consider whether cause-specific mortality may add useful information in long-term outcome studies of acute illnesses like sepsis. These approaches that we propose for research into sepsis-related post-acute mortality have similarities with the post-intensive care syndrome stakeholder priorities [61]. Finally, sepsis and septic shock has been recently redefined [1, 62], which also prompts reassessment of the post-acute mortality and morbidity epidemiology using more recent patient cohorts.

Conclusions

The available literature is of insufficient quality to sustain the hypothesis that sepsis exerts an independent and potentially causal effect on post-acute mortality. Inferences about a causal link between sepsis and post-acute mortality is based on a few studies that have inadequately adjusted for confounders in the relationship between acute illness and longer-term survival, such as age, effect of comorbidity, pre-acute illness trajectory, and functional status at hospital discharge.

Key messages

- Post-acute mortality in sepsis survivors is common; however, causality and the magnitude of this relationship is uncertain
- Acute mortality from sepsis has improved with time. Most studies in this systematic review report patient cohorts recruited before the year 2005 and report additional one-year risk of death following sepsis. Only a minority of included studies report control cohorts and explicitly assess sepsis-specific additional risk
- Our systematic review thus highlights the need for well-conducted studies using more recent datasets to identify the independent (and modifiable) predictors of post-acute mortality in sepsis survivors

Additional file

Additional file 1: Table S1. Search strategy. **Table S2.** Modified Newcastle Ottawa Score (NOS). **Table S3.** Description of studies included in the systematic review. **Table S4.** Baseline risk, acute illness risk, mortality by sepsis category, and outcomes in sepsis patients. **Table S5.** Egger's Test for small-study effects. Note: data input format theta se_theta assumed. **Table S6.** Confounding and causality assessment from studies reporting control arms. **Figure S1.** Distribution of customized Newcastle Ottawa Score in the studies identified by the systematic review. (DOC 361 kb)

Abbreviations

ARDS: acute respiratory distress syndrome; contour-enhanced funnel plot; NOS: Newcastle-Ottawa score; QOL: quality of life; RCT: randomized controlled trial.

Competing interests

The authors declare that they have no competing interests.

Authors' contributions

MSH, KR, and GR conceived the study. MSH and MA designed the literature search. MSH, MA, and VK completed the study selection. MSH and MA performed the data extraction. MSH and GR wrote the first draft of the manuscript. All authors contributed to the development of the manuscript and revisions. All authors read and approved the final manuscript.

Acknowledgements

This work was performed at Kings College London, London, UK and Sunnybrook Health Sciences Centre, Toronto, Canada. This research did not receive any additional funding. MSH acknowledges the support of the UK NIHR Biomedical Research Centre scheme.

Author details

¹Guy's and St Thomas' NHS Foundation Trust, ICU support Offices, 1st Floor, East Wing, St Thomas' Hospital, London SE1 7EH, UK. ²Division of Asthma, Allergy and Lung Biology, Kings College London, London SE1 9RT, UK. ³Intensive Care National Audit & Research Centre, Napier House, 24 High Holborn, London WC1V 6AZ, UK. ⁴Interdepartmental Division of Critical Care Medicine, Sunnybrook Health Sciences Centre, 2075 Bayview Avenue, D5 03, Toronto, Ontario M4N 3M5, Canada.

Received: 4 December 2015 Accepted: 31 March 2016

Published online: 13 April 2016

References

1. Singer M, Deutschman CS, Seymour CW, Shankar-Hari M, Annane D, Bauer M, et al. The Third International Consensus definitions for sepsis and septic shock (Sepsis-3). *JAMA*. 2016;315(8):801–10.
2. Fleischmann C, Scherag A, Adhikari NK, Hartog CS, Tsaganos T, Schlattmann P, Angus DC, Reinhart K, International Forum of Acute Care Trialists. Assessment of global incidence and mortality of hospital-treated sepsis - current estimates and limitations. *Am J Respir Crit Care Med*;193(3):259–72.
3. Stevenson EK, Rubenstein AR, Radin GT, Wiener RS, Walkey AJ. Two decades of mortality trends among patients with severe sepsis: a comparative meta-analysis*. *Crit Care Med*. 2014;42(3):625–31.
4. Ortego A, Gaieski DF, Fuchs BD, Jones T, Halpern SD, Small DS, et al. Hospital-based acute care use in survivors of septic shock. *Crit Care Med*. 2015;43(4):729–37.
5. Goodwin AJ, Rice DA, Simpson KN, Ford DW. Frequency, cost, and risk factors of readmissions among severe sepsis survivors. *Crit Care Med*. 2015; 43(4):738–46.
6. Dharmarajan K, Hsieh AF, Lin Z, Bueno H, Ross JS, Horwitz LI, et al. Diagnoses and timing of 30-day readmissions after hospitalization for heart failure, acute myocardial infarction, or pneumonia. *JAMA*. 2013;309(4):355–63.
7. Wang T, Derhovanessian A, De Cruz S, Belperio JA, Deng JC, Hoo GS. Subsequent infections in survivors of sepsis: epidemiology and outcomes. *J Intensive Care Med*. 2014;29(2):87–95.
8. Yende S, D'Angelo G, Kellum JA, Weissfeld L, Fine J, Welch RD, et al. Inflammatory markers at hospital discharge predict subsequent mortality after pneumonia and sepsis. *Am J Respir Crit Care Med*. 2008;177(11):1242–7.
9. Winters BD, Eberlein M, Leung J, Needham DM, Pronovost PJ, Sevransky JE. Long-term mortality and quality of life in sepsis: a systematic review. *Crit Care Med*. 2010;38(5):1276–83.
10. Yende S, Iwashyna TJ, Angus DC. Interplay between sepsis and chronic health. *Trends Mol Med*. 2014;20(4):234–8.
11. Iwashyna TJ, Cooke CR, Wunsch H, Kahn JM. Population burden of long-term survivorship after severe sepsis in older Americans. *J Am Geriatr Soc*. 2012;60(6):1070–7.
12. Iwashyna TJ. Trajectories of recovery and dysfunction after acute illness, with implications for clinical trial design. *Am J Respir Crit Care Med*. 2012;186(4):302–4.

13. Rubenfeld GD. Does the hospital make you older faster? *Am J Respir Crit Care Med.* 2012;185(8):796–8.
14. Hill AB. The environment and disease: association or causation? *Proc R Soc Med.* 1965;58:295–300.
15. Hoffer M. The Bradford Hill considerations on causality: a counterfactual perspective. *Emerg Themes Epidemiol.* 2005;2:11.
16. Greenland S, Pearl J, Robins JM. Causal diagrams for epidemiologic research. *Epidemiology.* 1999;10(1):37–48.
17. Imai K, Keele L, Tingley D, Yamamoto T. Unpacking the black box of causality: learning about causal mechanisms from experimental and observational studies. *Am Polit Sci Rev.* 2011;105(04):765–89.
18. Grimes DA, Schulz KF. Bias and causal associations in observational research. *Lancet.* 2002;359(9302):248–52.
19. Bone RC, Sibbald WJ, Sprung CL. The ACCP-SCCM consensus conference on sepsis and organ failure. *Chest.* 1992;101(6):1481–3.
20. Levy MM, Fink MP, Marshall JC, Abraham E, Angus D, Cook D, et al. 2001 SCCM/ESICM/ACCP/ATS/SIS International Sepsis Definitions Conference. *Crit Care Med.* 2003;31(4):1250–6.
21. Haraldsen P, Andersson R. Quality of life, morbidity, and mortality after surgical intensive care: a follow-up study of patients treated for abdominal sepsis in the surgical intensive care unit. *Eur J Surg Suppl.* 2003;588:23–7.
22. Peters JL, Sutton AJ, Jones DR, Abrams KR, Rushton L. Contour-enhanced meta-analysis funnel plots help distinguish publication bias from other causes of asymmetry. *J Clin Epidemiol.* 2008;61(10):991–6.
23. Nicholas JC. AAPLOT: Stata module for scatter plot with linear and/or quadratic fit, automatically annotated. In., S457286 edn: Boston College Department of Economics; 2011. <https://ideas.repec.org/c/boc/bocode/s457286.html>.
24. Iwashyna TJ, Netzer G, Langa KM, Cigolle C. Spurious inferences about long-term outcomes: the case of severe sepsis and geriatric conditions. *Am J Respir Crit Care Med.* 2012;185(8):835–41.
25. Dick A, Liu H, Zwanziger J, Perencevich E, Furuya EY, Larson E, et al. Long-term survival and healthcare utilization outcomes attributable to sepsis and pneumonia. *BMC Health Serv Res.* 2012;12:432.
26. Chao PW, Shih CJ, Lee YJ, Tseng CM, Kuo SC, Shih YN, et al. Association of postdischarge rehabilitation with mortality in intensive care unit survivors of sepsis. *Am J Respir Crit Care Med.* 2014;190(9):1003–11.
27. Al Thaqafi AH, Farahat FM, Al Harbi MI, Al Amri AF, Perfect JR. Predictors and outcomes of *Candida* bloodstream infection: eight-year surveillance, western Saudi Arabia. *Int J Infect Dis.* 2014;21:5–9.
28. Zhang K, Mao X, Fang Q, Jin Y, Cheng B, Xie G, et al. Impaired long-term quality of life in survivors of severe sepsis: Chinese multicenter study over 6 years. *Anaesthesist.* 2013;62(12):995–1002.
29. Cuthbertson BH, Elders A, Hall S, Taylor J, MacLennan G, Mackirdy F, et al. Mortality and quality of life in the five years after severe sepsis. *Crit Care.* 2013;17(2):R70.
30. Ghelani D, Moran JL, Sloggett A, Leeson RJ, Peake SL. Long-term survival of intensive care and hospital patient cohorts compared with the general Australian population: a relative survival approach. *J Eval Clin Pract.* 2009;15(3):425–35.
31. Koch A, Weiskirchen R, Kunze J, Duckers H, Bruensing J, Buendgens L, et al. Elevated asymmetric dimethylarginine levels predict short- and long-term mortality risk in critically ill patients. *J Crit Care.* 2013;28(6):947–53.
32. Korosec Jagodic H, Jagodic K, Podbregar M. Long-term outcome and quality of life of patients treated in surgical intensive care: a comparison between sepsis and trauma. *Crit Care.* 2006;10(5):R134.
33. Cecere LM, Rubenfeld GD, Park DR, Root RK, Goss CH. Long-term survival after hospitalization for community-acquired and healthcare-associated pneumonia. *Respiration.* 2010;79(2):128–36.
34. Bates DW, Pruess KE, Lee TH. How bad are bacteremia and sepsis? Outcomes in a cohort with suspected bacteremia. *Arch Intern Med.* 1995;155(6):593–8.
35. Davidson TA, Rubenfeld GD, Caldwell ES, Hudson LD, Steinberg KP. The effect of acute respiratory distress syndrome on long-term survival. *Am J Respir Crit Care Med.* 1999;160(6):1838–42.
36. Leibovici L, Samra Z, Konigsberger H, Drucker M, Ashkenazi S, Pitlik SD. Long-term survival following bacteremia or fungemia. *JAMA.* 1995;274(10):807–12.
37. Linder A, Guh D, Boyd JH, Walley KR, Anis AH, Russell JA. Long-term (10-year) mortality of younger previously healthy patients with severe sepsis/septic shock is worse than that of patients with nonseptic critical illness and of the general population. *Crit Care Med.* 2014;42(10):2211–8.
38. Prescott HC, Langa KM, Liu V, Escobar GJ, Iwashyna TJ. Increased 1-year healthcare use in survivors of severe sepsis. *Am J Respir Crit Care Med.* 2014;190(1):62–9.
39. Quartin AA, Schein RM, Kett DH, Peduzzi PN. Magnitude and duration of the effect of sepsis on survival. Department of Veterans Affairs Systemic Sepsis Cooperative Studies Group. *JAMA.* 1997;277(13):1058–63.
40. Yende S, Angus DC, Ali IS, Somes G, Newman AB, Bauer D, et al. Influence of comorbid conditions on long-term mortality after pneumonia in older people. *J Am Geriatr Soc.* 2007;55(4):518–25.
41. Yende S, Linde-Zwirble W, Mayr F, Weissfeld LA, Reis S, Angus DC. Risk of cardiovascular events in survivors of severe sepsis. *Am J Respir Crit Care Med.* 2014;189(9):1065–1074.
42. Waterer GW, Kessler LA, Wunderink RG. Medium-term survival after hospitalization with community-acquired pneumonia. *Am J Respir Crit Care Med.* 2004;169(8):910–4.
43. Hedlund JU, Ortvqvist AB, Kalin ME, Granath F. Factors of importance for the long term prognosis after hospital treated pneumonia. *Thorax.* 1993;48(8):785–9.
44. Yealy DM, Kellum JA, Huang DT, Barnato AE, Weissfeld LA, Pike F, et al. A randomized trial of protocol-based care for early septic shock. *N Engl J Med.* 2014;370(18):1683–93.
45. Forceville X, Laviolle B, Annane D, Vitoux D, Bleichner G, Korach JM, et al. Effects of high doses of selenium, as sodium selenite, in septic shock: a placebo-controlled, randomized, double-blind, phase II study. *Crit Care.* 2007;11(4):R73.
46. Laupland KB, Zygun DA, Doig CJ, Bagshaw SM, Svenson LW, Fick GH. One-year mortality of bloodstream infection-associated sepsis and septic shock among patients presenting to a regional critical care system. *Intensive Care Med.* 2005;31(2):213–9.
47. Poulsen JB, Moller K, Kehlet H, Perner A. Long-term physical outcome in patients with septic shock. *Acta Anaesthesiol Scand.* 2009;53(6):724–30.
48. Carlsen S, Perner A. East Danish Septic Shock Cohort I. Initial fluid resuscitation of patients with septic shock in the intensive care unit. *Acta Anaesthesiol Scand.* 2011;55(4):394–400.
49. Regazzoni CJ, Zamora RJ, Petrucci E, Pisarevsky AA, Saad AK, De Molle D, et al. Hospital and 1-year outcomes of septic syndromes in older people: a cohort study. *J Gerontol A Biol Sci Med Sci.* 2008;63(2):210–2.
50. Wang HE, Szychowski JM, Griffin R, Safford MM, Shapiro NI, Howard G. Long-term mortality after community-acquired sepsis: a longitudinal population-based cohort study. *BMJ Open.* 2014;4(1):e004283.
51. Utzolino S, Ditzel CM, Baier PK, Hopt UT, Kaffarnik MF. The obesity paradox in surgical intensive care patients with peritonitis. *J Crit Care.* 2014;29(5):887. e881–885.
52. Johnstone J, Eurich DT, Majumdar SR, Jin Y, Marrie TJ. Long-term morbidity and mortality after hospitalization with community-acquired pneumonia: a population-based cohort study. *Medicine (Baltimore).* 2008;87(6):329–34.
53. Jacobsson G, Nasic S. Long-term outcome of invasive *Staphylococcus aureus* infections. *Scand J Infect Dis.* 2012;44(5):350–4.
54. Herridge MS, Tansey CM, Matte A, Tomlinson G, Diaz-Granados N, Cooper A, et al. Functional disability 5 years after acute respiratory distress syndrome. *N Engl J Med.* 2011;364(14):1293–304.
55. Herridge MS, Cheung AM, Tansey CM, Matte-Martyn A, Diaz-Granados N, Al-Saidi F, et al. One-year outcomes in survivors of the acute respiratory distress syndrome. *N Engl J Med.* 2003;348(8):683–93.
56. Bellani G, Laffey JG, Pham T, Fan E, Brochard L, Esteban A, et al. Epidemiology, patterns of care, and mortality for patients with acute respiratory distress syndrome in intensive care units in 50 countries. *JAMA.* 2016;315(8):788–800.
57. Kahn JM, Benson NM, Appleby D, Carson SS, Iwashyna TJ. Long-term acute care hospital utilization after critical illness. *JAMA.* 2010;303(22):2253–9.
58. Liu V, Lei X, Prescott HC, Kipnis P, Iwashyna TJ, Escobar GJ. Hospital readmission and healthcare utilization following sepsis in community settings. *J Hosp Med.* 2014;9(8):502–7.
59. Bagshaw SM, Stelfox HT, Johnson JA, McDermid RC, Rolfson DB, Tsuyuki RT, et al. Long-term association between frailty and health-related quality of life among survivors of critical illness: a prospective multicenter cohort study. *Crit Care Med.* 2015;43(5):973–82.
60. Le Maguet P, Roquilly A, Lasocki S, Asehnoune K, Carise E, Saint Martin M, et al. Prevalence and impact of frailty on mortality in elderly ICU patients: a

- prospective, multicenter, observational study. *Intensive Care Med.* 2014;40(5):674–82.
61. Elliott D, Davidson JE, Harvey MA, Bemis-Dougherty A, Hopkins RO, Iwashyna TJ, et al. Exploring the scope of post-intensive care syndrome therapy and care: engagement of non-critical care providers and survivors in a second stakeholders meeting. *Crit Care Med.* 2014;42(12):2518–26.
 62. Shankar-Hari M, Phillips GS, Levy ML, et al. Developing a new definition and assessing new clinical criteria for septic shock: for the third international consensus definitions for sepsis and septic shock (sepsis-3). *JAMA.* 2016;315(8):775–87.
 63. Angus DC, Laterre PF, Helterbrand J, Ely EW, Ball DE, Garg R, et al. The effect of drotrecogin alfa (activated) on long-term survival after severe sepsis. *Crit Care Med.* 2004;32(11):2199–206.
 64. Carl DE, Grossman C, Behnke M, Sessler CN, Gehr TW. Effect of timing of dialysis on mortality in critically ill, septic patients with acute renal failure. *Hemodial Int.* 2010;14(1):11–7.
 65. Karlsson S, Ruokonen E, Varpula T, Ala-Kokko TI, Pettila V, Finnsepsis SG. Long-term outcome and quality-adjusted life years after severe sepsis. *Crit Care Med.* 2009;37(4):1268–74.
 66. Laterre PF, Abraham E, Janes JM, Trzaskoma BL, Correll NL, Booth FV. ADDRESS (ADministration of DRotrecogin alfa [activated] in Early stage Severe Sepsis) long-term follow-up: one-year safety and efficacy evaluation. *Crit Care Med.* 2007;35(6):1457–63.
 67. Lee H, Doig CJ, Ghali WA, Donaldson C, Johnson D, Manns B. Detailed cost analysis of care for survivors of severe sepsis. *Crit Care Med.* 2004;32(4):981–5.
 68. Lopes JA, Fernandes P, Jorge S, Resina C, Santos C, Pereira A, et al. Long-term risk of mortality after acute kidney injury in patients with sepsis: a contemporary analysis. *BMC Nephrol.* 2010;11:9.
 69. Opal SM, Laterre PF, Francois B, LaRosa SP, Angus DC, Mira JP, et al. Effect of eritoran, an antagonist of MD2-TLR4, on mortality in patients with severe sepsis: the ACCESS randomized trial. *JAMA.* 2013;309(11):1154–62.
 70. Perl TM, Dvorak L, Hwang T, Wenzel RP. Long-term survival and function after suspected gram-negative sepsis. *JAMA.* 1995;274(4):338–45.
 71. Puskarich MA, Marchick MR, Kline JA, Steuerwald MT, Jones AE. One year mortality of patients treated with an emergency department based early goal directed therapy protocol for severe sepsis and septic shock: a before and after study. *Crit Care.* 2009;13(5):R167.
 72. Seidelin JB, Nielsen OH, Strom J. Soluble L-selectin levels predict survival in sepsis. *Intensive Care Med.* 2002;28(11):1613–8.
 73. Shapiro NI, Howell MD, Talmor D, Donnino M, Ngo L, Bates DW. Mortality in Emergency Department Sepsis (MEDS) score predicts 1-year mortality. *Crit Care Med.* 2007;35(1):192–8.
 74. Vasile VC, Chai HS, Abdeldayem D, Afessa B, Jaffe AS. Elevated cardiac troponin T levels in critically ill patients with sepsis. *Am J Med.* 2013;126(12):1114–21.
 75. Braun L, Riedel AA, Cooper LM. Severe sepsis in managed care: analysis of incidence, one-year mortality, and associated costs of care. *J Manag Care Pharm.* 2004;10(6):521–30.
 76. Ou SY, Chu H, Chao PW, Ou SM, Lee YJ, Kuo SC, et al. Effect of the use of low and high potency statins and sepsis outcomes. *Intensive Care Med.* 2014;40(10):1509–17.
 77. Weycker D, Akhras KS, Edelsberg J, Angus DC, Oster G. Long-term mortality and medical care charges in patients with severe sepsis. *Crit Care Med.* 2003;31(9):2316–23.
 78. Drewry AM, Samra N, Skrupky LP, Fuller BM, Compton SM, Hotchkiss RS. Persistent lymphopenia after diagnosis of sepsis predicts mortality. *Shock.* 2014;42(5):383–91.
 79. Fatkenheuer G, Preuss M, Salzberger B, Schmeisser N, Cornely OA, Wisplinghoff H, et al. Long-term outcome and quality of care of patients with *Staphylococcus aureus* bacteremia. *Eur J Clin Microbiol Infect Dis.* 2004;23(3):157–62.
 80. Sasse KC, Nauenberg E, Long A, Anton B, Tucker HJ, Hu TW. Long-term survival after intensive care unit admission with sepsis. *Crit Care Med.* 1995;23(6):1040–7.
 81. Yaw LK, Robinson JO, Ho KM. A comparison of long-term outcomes after methicillin-resistant and methicillin-sensitive *Staphylococcus aureus* bacteraemia: an observational cohort study. *Lancet Infect Dis.* 2014;14(10):967–75.
 82. Adamuz J, Viasus D, Jimenez-Martinez E, Isla P, Garcia-Vidal C, Dorca J, et al. Incidence, timing and risk factors associated with 1-year mortality after hospitalization for community-acquired pneumonia. *J Infect.* 2014;68(6):534–41.
 83. Brancati FL, Chow JW, Wagener MM, Vacarello SJ, Yu VL. Is pneumonia really the old man's friend? Two-year prognosis after community-acquired pneumonia. *Lancet.* 1993;342(8862):30–3.
 84. Hsu JL, Siroka AM, Smith MW, Holodniy M, Meduri GU. One-year outcomes of community-acquired and healthcare-associated pneumonia in the Veterans Affairs Healthcare System. *Int J Infect Dis.* 2011;15(6):e382–7.
 85. Reade MC, Yende S, D'Angelo G, Kong L, Kellum JA, Barnato AE, et al. Differences in immune response may explain lower survival among older men with pneumonia. *Crit Care Med.* 2009;37(5):1655–62.
 86. Hynninen M, Wennervirta J, Leppaniemi A, Pettila V. Organ dysfunction and long term outcome in secondary peritonitis. *Langenbecks Arch Surg.* 2008;393(1):81–6.

Submit your next manuscript to BioMed Central and we will help you at every step:

- We accept pre-submission inquiries
- Our selector tool helps you to find the most relevant journal
- We provide round the clock customer support
- Convenient online submission
- Thorough peer review
- Inclusion in PubMed and all major indexing services
- Maximum visibility for your research

Submit your manuscript at
www.biomedcentral.com/submit

