

RESEARCH

Open Access

Augmented renal clearance in septic and traumatized patients with normal plasma creatinine concentrations: identifying at-risk patients

Andrew A Udy^{1,2*}, Jason A Roberts^{1,2,3}, Andrew F Shorr⁴, Robert J Boots^{1,2} and Jeffrey Lipman^{1,2}

Abstract

Introduction: Improved methods to optimize drug dosing in the critically ill are urgently needed. Traditional prescribing culture involves recognition of factors that mandate dose reduction (such as renal impairment), although optimizing drug exposure, through more frequent or augmented dosing, represents an evolving strategy. Elevated creatinine clearance (CL_{CR}) has been associated with sub-therapeutic antibacterial concentrations in the critically ill, a concept termed augmented renal clearance (ARC). We aimed to determine the prevalence of ARC in a cohort of septic and traumatized critically ill patients, while also examining demographic, physiological and illness severity characteristics that may help identify this phenomenon.

Methods: This prospective observational study was performed in a 30-bed tertiary level, university affiliated, adult intensive care unit. Consecutive traumatized and septic critically ill patients, receiving antibacterial therapy, with a plasma creatinine concentration ≤ 110 $\mu\text{mol/L}$, were eligible for enrolment. Pulse contour analysis (Vigileo / Flo Trac[®] system, Edwards Lifesciences, Irvine, CA, USA), was used to provide continuous cardiac index (CI) assessment over a single six-hour dosing interval. Urinary CL_{CR} measures were obtained concurrently.

Results: Seventy-one patients contributed data (sepsis $n = 43$, multi-trauma $n = 28$). Overall, 57.7% of the cohort manifested ARC, although there was a greater prevalence in trauma (85.7% versus 39.5%, $P < 0.001$). In all patients, a weak correlation was noted between CI and CL_{CR} ($r = 0.346$, $P = 0.003$). This was mostly driven by septic patients ($r = 0.508$, $P = 0.001$), as no correlation ($r = -0.012$, $P = 0.951$) was identified in trauma. Those manifesting ARC were younger ($P < 0.001$), male ($P = 0.012$), with lower acute physiology and chronic health evaluation (APACHE) II ($P = 0.008$) and modified sequential organ failure assessment (SOFA) scores ($P = 0.013$), and higher cardiac indices ($P = 0.013$). In multivariate analysis, age ≤ 50 years, trauma, and a modified SOFA score ≤ 4 , were identified as significant risk factors. These had greater utility in predicting ARC, compared with CI assessment alone.

Conclusions: Diagnosis, illness severity and age, are likely to significantly influence renal drug elimination in the critically ill, and must be regularly considered in future study design and daily prescribing practice.

Introduction

Accurate pharmaceutical prescription remains uniquely challenging in the critically ill. Many dosing schedules are simply extrapolated from data derived from healthy volunteers or ambulatory patients, without consideration of the

pathophysiology [1] or clinical heterogeneity, often encountered in this setting. Capillary leak, fluid loading, decreased protein binding, use of vasoactive medications and altered excretory organ function, will significantly distort the 'normal' pharmacokinetic (PK) profile of many agents [2]. Most concerning is the potential effects on antibacterial drug exposure, given the wealth of data demonstrating improved outcomes with early appropriate therapy [3-5]. Although infrequently considered, such

* Correspondence: andrew_udy@health.qld.gov.au

¹Burns, Trauma, and Critical Care Research Centre, University of Queensland, Royal Brisbane and Womens Hospital, Butterfield Street, Herston 4029, Australia

Full list of author information is available at the end of the article

issues may not only confound the successful individual use of many pharmaceuticals, but also the planning, methodology and interpretation of clinical trials in this population [6].

A key PK variable of interest is drug clearance (CL), with previous data demonstrating notably elevated values in subsets of critically ill patients [7]. This phenomenon has recently been termed augmented renal clearance (ARC) [8] and may significantly impact the successful application of many renally eliminated agents by promoting sub-therapeutic drug exposure [8,9]. Although specific data concerning drug CL in critical illness remains sparse, elevated urinary creatinine clearance (CL_{CR}), as a marker of ARC, has been documented in sepsis [10], ventilator associated pneumonia [11], traumatic brain injury [12], burns [13], multi-trauma [14] and post-operatively [15]. Furthermore, elevated CL_{CR} has been closely linked with sub-therapeutic β -lactam antibacterial trough concentrations [16,17] in addition to being significantly correlated with renal drug elimination [7].

Identification of patients manifesting ARC remains clinically challenging, principally as many agents (most notably antibacterials) manifest 'silent' pharmacodynamic indices, making under-dosing substantially less visible [18]. Although various mathematical estimates of glomerular filtration are widely applied [19,20], each was primarily designed for use outside of the ICU, making application in this setting flawed [21,22] and of little value in guiding therapy. While a measured CL_{CR} has greater utility [23], a defined urinary collection period is required, thereby limiting application to initial dose selection. Improved methods to identify patients with ARC using simple bedside assessment are urgently required.

The physiological alterations promoting ARC remain poorly understood. In large animal models of gram-negative sepsis, elevated cardiac index (CI), low systemic vascular resistance, and increased major organ blood flow have been demonstrated [24]. Application of aggressive fluid resuscitation [25] and vasopressor support [26] further augments this process, leading to substantial changes in renal function. Many parallels can be drawn with pregnancy, where similar cardiovascular changes are associated with augmented renal blood flow and glomerular filtration [27]. As such, in the absence of established acute kidney injury (AKI), the innate hemodynamic response to critical illness, coupled with common clinical interventions, may promote increased solute delivery to the kidneys and subsequent augmented renal elimination.

In this respect, assessment of CI offers a logical, pragmatic and physiologically sound method of rapidly assessing patients for the presence of ARC. To our knowledge, there has been little data reported on this application, representing a new, unique, indication for cardiovascular monitoring. Importantly, although CI

assessment has historically employed invasive techniques (such as pulmonary artery catheterization), a variety of new devices are making continuous CI measurement accessible, feasible and safe [28]. The aims of this pilot prospective observational study were, therefore, to: a) describe the prevalence of ARC in a cohort of septic and traumatized critically ill patients receiving antibacterial therapy; b) correlate CL_{CR} and CI in these patients; and c) examine demographic, physiological and illness severity characteristics that may help to identify patients manifesting ARC.

Materials and methods

Study population

Patients were enrolled consecutively as part of a wider open label study examining β -lactam antibacterial PK in critical illness, the methodology of which has been published elsewhere [29]. In brief, patients were eligible for enrolment if they were: a) 18 to 80 years of age; and b) receiving piperacillin-tazobactam for treatment of presumed or confirmed nosocomial infection, while manifesting a systemic inflammatory response syndrome (SIRS) [30], or were receiving cefazolin as prophylaxis following multi-trauma. This, therefore, represents a convenience sample of multi-trauma and septic critically ill patients admitted to our institution. This manuscript reports a separate, independent analysis, focusing on ARC. The study protocol was approved by our institutional human research ethics committee (HREC 2007/188) and informed consent was obtained from either the patient or their substitute decision maker in all cases.

Study protocol

An in-depth physiological and PK investigation was performed over a single six-hour dosing interval following antibacterial infusion [29]. Pulse contour analysis, utilizing the Vigileo[®] system (software version 1.10), connected to an existing intra-arterial catheter via a Flo Trac[®] (Edwards Lifesciences, Irvine, CA, USA) sensor, was employed as the primary method of measuring CI. Demographic data including patient age, gender, body weight and height were inputted, following which the sensor was levelled to the phlebostatic axis and 'zeroed' to atmospheric pressure. The system provides continuous cardiac output data utilizing the heart rate and an index of stroke volume (obtained from the arterial pressure waveform), which is automatically averaged and updated. CI ($L/min/m^2$) is then calculated as the cardiac output (L/min) divided by the body surface area (BSA) (m^2). Three CI measurements were recorded at 0, 180, and 300 minutes, after which the mean value was calculated for use in subsequent analysis.

CL_{CR} was measured as the primary method of determining kidney function. All urine was collected via an

indwelling catheter over three two-hour time periods (0 to 120, 120 to 240, and 240 to 360 minutes, respectively), following which urinary volume and creatinine concentration were determined by laboratory analysis. Creatinine measurement in plasma and urine utilized automated analyzers employing a modified Jaffe (alkaline picrate) technique, representing an isotope dilution mass spectrometry (IDMS) traceable assay. Plasma creatinine concentrations measured on the day of investigation were used to calculate each CL_{CR} (normalized to a BSA of 1.73 m^2), after which the mean value was used in further analysis.

Additional data, including the requirement for mechanical ventilation, vasopressor support, modified sequential organ failure assessment (SOFA) score (excluding the neurological component) and 24-hour fluid balance, were also recorded on the day of drug administration. Admission acute physiology and chronic health evaluation (APACHE) II score, in addition to ICU and in-hospital clinical outcomes, were also recorded. Given that changes in cardiovascular physiology are unlikely to promote enhanced renal elimination in the setting of evolving AKI, patients with a plasma creatinine concentration greater than the upper limit of the reported reference range ($>110\text{ }\mu\text{mol/L}$) were excluded from further analysis. ARC was defined as a $CL_{CR} \geq 130\text{ ml/min/1.73 m}^2$, given previous data demonstrating an association with sub-therapeutic β -lactam concentrations, when using standard doses [17].

Statistics

Continuous data are presented as the mean (SD) or median [IQR]. Categorical data are presented as counts

(%). Correlation was assessed by means of a scatter graph and Pearson correlation coefficient (r). Comparisons between groups utilized an Independent Student T-test or Mann-Whitney U test for continuous data, and a Chi-square or Fishers Exact test for categorical data, where analysis assumptions were met. A backward conditional logistic regression model was developed to describe risk factors for ARC in multivariate analysis. Covariates were identified if the associated P -value was <0.15 in univariate testing, and the Hosmer-Lemeshow statistic was used to assess goodness of fit. Receiver operator characteristic (ROC) curves were constructed to examine the accuracy of any variable to predict ARC. A P -value <0.05 was considered as indicating statistical significance, and all analyses were performed using SPSS version 19 (Chicago, IL, USA).

Results

Eighty patients were enrolled in the open label PK study, fifty meeting the criteria for sepsis, and the remaining thirty admitted post multi-trauma. One patient was excluded from further analysis as no CI measurements were available, while a further eight patients were excluded due to a plasma creatinine concentration $>110\text{ }\mu\text{mol/L}$ on the day of study. Laboratory, demographic, illness severity and outcome data for the remaining seventy-one patients (sepsis $n = 43$, multi-trauma $n = 28$) are presented in Table 1. As expected, young male patients dominated the multi-trauma group, although illness severity scores were similar between diagnostic categories. Data collection occurred a median of 1.60 [1.20 to 2.13] days post admission in the trauma subgroup, compared with 4.11 [1.68 to 6.83] days in sepsis

Table 1 Laboratory, demographic and illness-severity data of all patients (n = 71).

Variable	All patients (number = 71)	Trauma (number = 28)	Sepsis (number = 43)	P-value ^a
Age, years, mean (SD)	42.4 (16.6)	36.4 (13.9)	46.3 (17.1)	0.013
Male gender, number (%)	45 (63.4)	23 (82.1)	22 (51.2)	0.008
BSA, m^2 , mean (SD)	1.98 (0.26)	2.01 (0.25)	1.96 (0.27)	0.415
APACHE II score, mean (SD)	17.9 (7.15)	16.1 (7.68)	19.0 (6.62)	0.096
Modified SOFA score, median [IQR]	3 [2-5]	3.5 [2-5]	3 [2-5]	0.659
Use of Vasopressors, number (%)	20 (28.2)	11 (39.3)	9 (20.9)	0.093
Mechanical ventilation, number (%)	66 (93.0)	26 (92.9)	40 (93.0)	1.000
24hour Fluid balance, ml, mean (SD)	656 (1,886)	1,209 (1903)	295 (1,806)	0.045
Plasma CR, $\mu\text{mol/L}$, mean (SD)	66.1 (18.1)	62.7 (13.2)	68.4 (20.5)	0.157
CI, L/min/m^2 , mean (SD)	4.20 (1.10)	4.30 (0.86)	4.13 (1.23)	0.507
CL_{CR} , ml/min/1.73 m^2 , mean (SD)	135 (51.8)	166 (42.5)	114 (47.2)	<0.001
Augmented renal clearance, n (%)	41 (57.7)	24 (85.7)	17 (39.5)	< 0.001
ICU length of stay, days, mean (SD)	16.0 (11.1)	13.3 (10.2)	17.8 (11.4)	0.090
ICU mortality, number (%)	3 (4.20)	1 (3.6)	2 (4.7)	1.000
Hospital mortality, number (%)	6 (8.50)	3 (10.7)	3 (7.0)	0.674

^aComparison between sub-groups. APACHE II, Acute Physiology and Chronic Health Evaluation; BSA, body surface area; CI, cardiac index; CL_{CR} , creatinine clearance; CR, creatinine concentration; SOFA, Sequential Organ Failure Assessment.

($P < 0.001$). Crude ICU (4.2%) and in-hospital (8.5%) mortality were remarkably low.

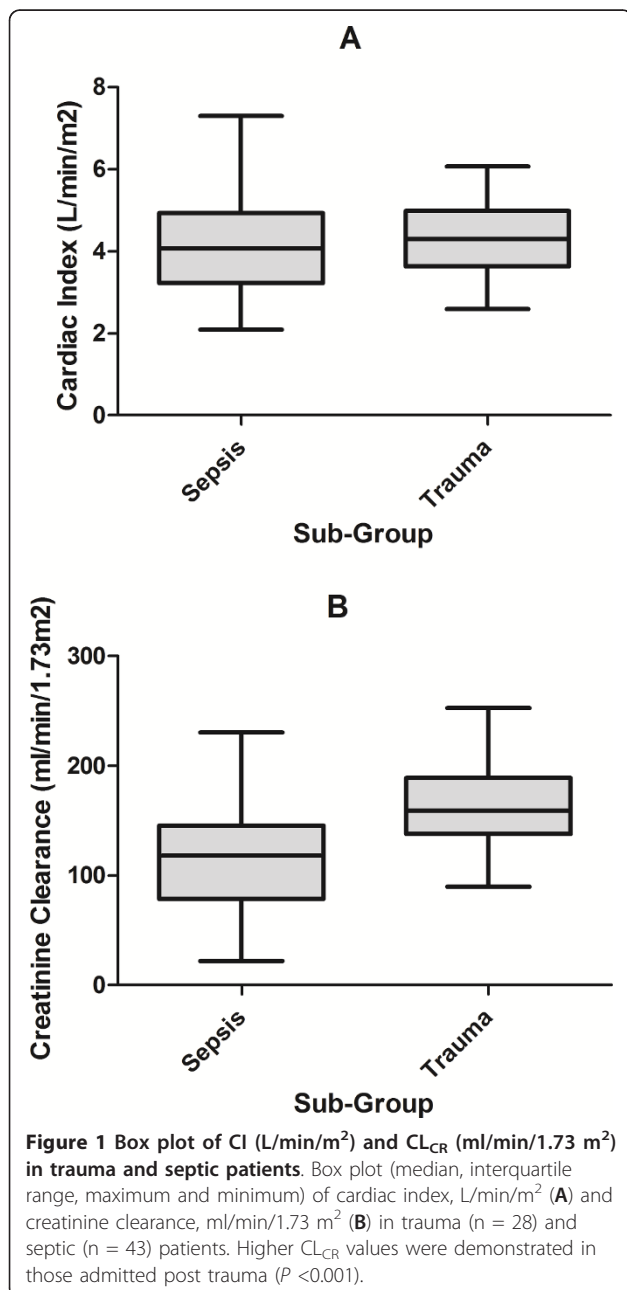
Overall, 57.7% of the cohort manifested ARC ($CL_{CR} \geq 130$ ml/min/1.73 m²), although higher CL_{CR} values were noted in traumatized patients (166 (42.5) versus 114 (47.2) ml/min/1.73 m², $P < 0.001$), leading to a greater prevalence in this group (85.7% versus 39.5%, $P < 0.001$). The range of CI and CL_{CR} measures observed in each diagnostic sub-group are presented in Figure 1. In all patients ($n = 71$), a weak, statistically significant correlation was evident between CI and CL_{CR} ($r = 0.346$, $P = 0.003$), although this was primarily due to the relationship

observed in septic patients ($r = 0.508$, $P = 0.001$), as no correlation ($r = -0.012$, $P = 0.951$) was evident in trauma patients (see Figure 2).

Differences in demographic, illness severity, physiological and laboratory data on the basis of ARC status are provided in Table 2. As illustrated, those manifesting ARC tended to be younger ($P < 0.001$), male ($P = 0.012$), with lower APACHE II ($P = 0.008$) and modified SOFA scores ($P = 0.013$) and higher cardiac indices ($P = 0.013$). The range of values recorded for age, CI, CL_{CR} and modified SOFA score are presented graphically in Figure 3.

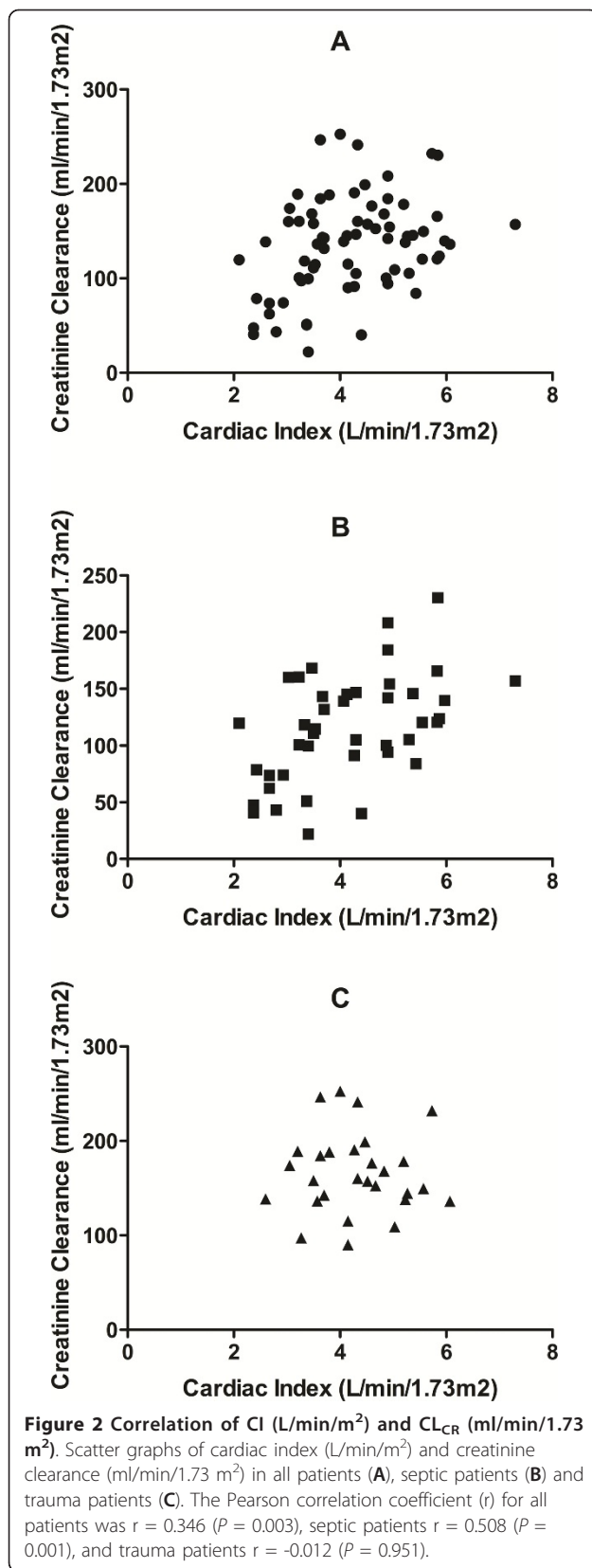
Linear variables associated with ARC were then dichotomized to facilitate multivariate logistic regression. Cut-points were identified from visual inspection of the data (Figures 3). Specifically, age ≤ 50 years, CI ≥ 3.5 L/min/m² and modified SOFA score ≤ 4 , along with gender and diagnostic sub-group, were entered as categorical variables into a backward conditional regression model. APACHE II scores were not included, as these are co-linear with age and SOFA, and poorly validated in trauma. This analysis identified age ≤ 50 years (adjusted odds ratio (OR) 28.6, 95% CI 4.4 to 187.2), trauma (adjusted OR 16.1, 95% CI 3.0 to 87.7) and modified SOFA score ≤ 4 (adjusted OR 5.1, 95% CI 1.0 to 25.0) as statistically significant risk factors for ARC. The r^2 value was 0.59, and the Hosmer-Lemeshow statistic had a significance value of $P = 0.834$, suggesting acceptable goodness of fit. There was no improvement in model performance when continuous variables were utilized.

To further illustrate the relative significance of these covariates, a weighted scoring system was constructed based on the adjusted ORs and their proportions to each other. Age ≤ 50 years was assigned six points, admission post-trauma three points and modified SOFA score ≤ 4 one point. Scores were then summated for each patient, with higher totals strongly associated ($P < 0.001$) with ARC (see Figure 4). This model was also compared with CI measurement as a predictor of ARC status using ROC analysis (see Figure 5). CI values alone demonstrate an area under the curve (AUC) of 0.67 (95% CI 0.54 to 0.81, $P = 0.013$), whereas the combined ARC score has improved accuracy, with an AUC of 0.89 (95% CI 0.80 to 0.97, $P < 0.001$). Separate ROC curves were also constructed utilizing CI values in each diagnostic sub-group (figures not displayed). In those manifesting trauma, CI was less discriminating, with an AUC of 0.57 (95% CI 0.31 to 0.84, $P = 0.646$), although this variable performed better in sepsis, AUC 0.72 (95% CI 0.57 to 0.87, $P = 0.015$).



Discussion

This pilot investigation, in the context of a larger study examining β -lactam antibacterial PK in the critically ill [29], has explored the relationship between CI and CL_{CR} in a cohort of septic and traumatized patients with



normal plasma creatinine concentrations. Overall, ARC was present in more than 50%, similar to a previous report in critically ill patients receiving anti-infective therapy [31]. A greater prevalence of ARC was noted in those suffering multi-trauma (85.7%). In univariate analysis, a statistically significant association between higher CI and ARC ($P = 0.013$) was observed, while in multivariate modelling, age (≤ 50 years), diagnostic category (trauma) and modified SOFA score (≤ 4) were identified as significant risk factors for ARC.

These findings principally suggest that the underlying disease process and physiological reserve, more than any specific cardiovascular parameter, are implicated in the development of ARC. This is highly clinically relevant, given the potential for significant sub-therapeutic drug exposure when employing 'standard' doses in such patients. Relevant examples include increased clinical failure [32] or drug resistance [33] with β -lactam antibacterial therapy or sub-optimal venous thromboembolism prophylaxis in those receiving low molecular weight heparin [34].

Multi-trauma has already been identified as a significant risk factor for ARC [9,12,14] and this is further confirmed by our findings. The absence of any correlation between CI and CL_{CR} in trauma is likely related to the higher CL_{CR} measures observed in this group, the narrow range of recorded cardiac indices (see Figure 1) and the smaller sample size. Furthermore, recruitment of renal reserve [35], typically seen in states characterized by protein loading [36], may potentially augment glomerular filtration in this setting, independent of changes in CI.

Importantly, the high prevalence of ARC observed in the trauma sub-group, despite the limited value of CI measurement as a discretionary variable, has considerable potential ramifications for both future study design [6] and daily prescribing practice. Specifically, this finding reminds the clinician that a 'one size fits all' approach to drug dosing in critical illness, is flawed and requires adjustment for a number of variables, least of which is diagnostic category. The recent poor results from clinical trials of emerging antibacterial agents in ventilator associated pneumonia [6] further illustrate this concept. Selecting a single dosing regimen for all study participants is unlikely to accommodate the range of clinical and physiological characteristics encountered.

The lower prevalence of ARC (39.5%) and greater variability in CL_{CR} and CI in the septic sub-group (Figure 1) reflects the heterogeneity of this syndrome and the wider spectrum of age and underlying co-morbid disease. Such variables significantly impact the available physiological reserve and, as such, the likelihood of manifesting augmented clearances. This is evidenced by

Table 2 Demographic, diagnostic and treatment-related data in those with and without augmented renal clearance.

Variable	ARC (number = 41)	No ARC (number = 30)	P-value
Age, years, mean (SD)	34.1 (11.7)	53.7 (15.5)	<0.001
Male gender, number (%)	31 (75.6)	14 (46.7)	0.012
BSA, m ² , mean (SD)	1.98 (0.25)	1.99 (0.28)	0.850
APACHE II score, mean (SD)	16.0 (6.33)	20.4 (7.49)	0.008
Modified SOFA score, median [IQR]	3 [2-4]	4 [3-6]	0.013
Use of vasopressors, number (%)	9 (22.0)	11 (36.7)	0.173
Mechanical ventilation, number (%)	39 (95.1)	27 (90.0)	0.644
24 hr Fluid balance, ml, mean (SD)	428 (2011)	967 (1684)	0.237
CI, L/min/m ² , mean (SD)	4.47 (1.01)	3.80 (1.12)	0.013
CL _{CR} , ml/min/1.73 m ² , mean (SD)	170 (32.9)	86.8 (29.5)	<0.001
Category	24 (58.5)	4 (13.3)	<0.001
Trauma, number (%)	17 (41.5)	26 (86.7)	<0.001
Sepsis, number (%)			

APACHE II, Acute Physiology and Chronic Health Evaluation score; BSA, body surface area; CI, cardiac index; CL_{CR}, creatinine clearance; SOFA, Sequential Organ Failure Assessment.

the strong overall association between ARC, lower modified SOFA scores and age, findings which are consistent with previous literature [37]. Identification of additional drivers of ARC in septic patients is not possible with the current dataset, although this is likely to reflect the interaction between the innate inflammatory response and available organ reserve.

Previous data examining the relationship between CI and renal solute elimination in critical illness are limited. Specifically, Brown *et al.* sequentially assessed CL_{CR} in fifty relatively young critically ill post-operative trauma and non-trauma patients while simultaneously measuring CI via a pulmonary artery catheter (PAC) [15]. After exclusion of those receiving inotropes or diuretics and those with sepsis or renal failure, a modest correlation was established between CI and CL_{CR} ($r = 0.63, P < 0.01$) [15]. Our study extends these findings, with data distinct from a peri-operative setting and suggests a modest correlation

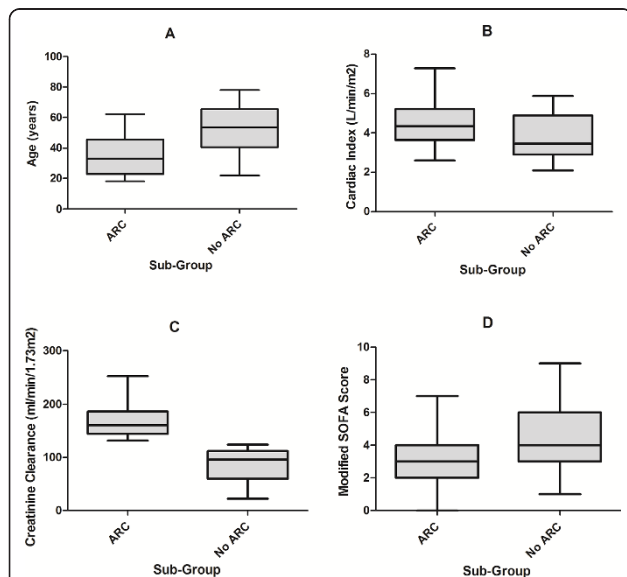


Figure 3 Box plot of age (years), CI (L/min/m²), CL_{CR} (ml/min/1.73 m²) and modified SOFA score in patients with and without augmented renal clearance. Box plot (median, interquartile range, maximum and minimum) of age, years (A), cardiac index, L/min/m² (B), creatinine clearance, ml/min/1.73 m² (C) and modified SOFA score (D), in those with (n = 41) and without (n = 30) augmented renal clearance. Younger age ($P < 0.001$), higher cardiac indices ($P = 0.013$) and lower modified SOFA scores ($P = 0.013$) were observed in those manifesting augmented renal clearance.

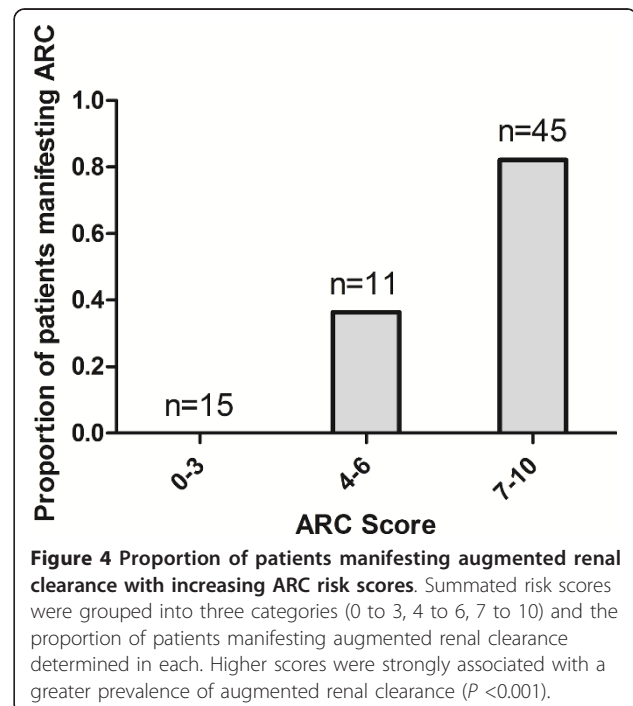
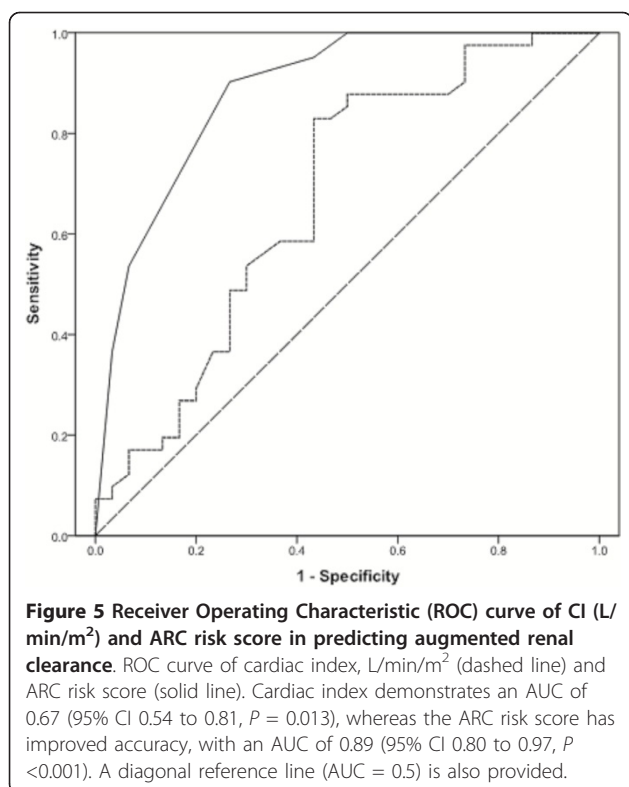


Figure 4 Proportion of patients manifesting augmented renal clearance with increasing ARC risk scores. Summated risk scores were grouped into three categories (0 to 3, 4 to 6, 7 to 10) and the proportion of patients manifesting augmented renal clearance determined in each. Higher scores were strongly associated with a greater prevalence of augmented renal clearance ($P < 0.001$).



between CI and CL_{CR} in critically ill septic patients ($r = 0.508$, $P = 0.001$).

The influence of common critical care interventions on cardiovascular and renal function remains to be accurately determined. Specifically, although improvements in CL_{CR} following intravenous fluid administration [25,38] and use of vasopressor agents [26,39] have been noted in large animal models, we did not observe any statistically significant difference in either the requirement for vasopressors ($P = 0.173$) or 24-hour fluid balance ($P = 0.237$) in those manifesting ARC. Importantly, these data could be misleading, as they represent information obtained around the time of drug dosing only and, therefore, fail to consider any prior interventions.

Minimally invasive pulse contour cardiac output analysis was employed in this study primarily due to ease of application and decreasing use of PACs in routine clinical practice [40]. Although mixed results have been reported in prior validation studies [41], particularly with the earlier software [42], later iterations have improved the accuracy of the device [43], with an acceptable percentage error [41] and concordance rate [44] in comparison to PAC thermodilution. Aortic valve abnormalities are still likely to cause discrepancy [45] through distortion of the pulse contour, although they were not actively screened for in our analysis. Importantly, despite the growing use of pulse contour cardiac output analysis in clinical practice, its use

in general intensive care remains controversial [46] and must be recognized as a limiting factor in this analysis.

Despite the perceived inaccuracies of any specific device(s), our findings indicate a potential new, unique, direction for minimally invasive CI monitoring in critically ill septic patients. The modest correlation observed between CI and CL_{CR} , in addition to the ROC analysis, suggests that elevated values may be viewed as a clinical 'trigger' in patients without AKI, to re-consider the dosing strategy in use, particularly in relation to antibacterial therapy. While additional prospective studies utilizing drug PK data are urgently required, clinical trials examining the efficacy of new agents in this setting must be cognisant of these findings [6]. Importantly, our data is limited temporally, such that we do not report changes in CI and CL_{CR} during the ICU stay. As critical illness represents a highly dynamic state, ongoing CI measurement may be even more useful in tailoring drug prescription over time.

We have not included specific drug PK data in these analyses for the following reasons: a) routine measurement of drug levels (β -lactam or otherwise) is infrequent; b) CI and CL_{CR} assessment are much more accessible in clinical practice; and c) CL_{CR} (allowing identification of ARC) was the primary end-point of interest. In addition, ARC may influence drug handling for many different pharmaceuticals, as CL_{CR} is recognized as a key PK covariate for renally eliminated agents [8,16,17]. It is acknowledged that CL_{CR} is not a 'gold standard' measure of glomerular filtration (such as inulin clearance), albeit tubular creatinine secretion is unlikely to influence the result at higher filtration rates [47]. Two-hour urinary collections were employed, as prior research has reported acceptable accuracy compared with longer time-periods [48]. The implications of the proposed ARC scoring system are also acknowledged, with the current findings being primarily speculative. Separate, large, multicenter validation studies are required, in order to establish its external validity, and assess any potential clinical utility.

Conclusions

To our knowledge, this is the first study to correlate CI and CL_{CR} in a range of critically ill patients, in addition to investigating the application of pulse contour cardiac output monitoring as a means of identifying augmented renal solute elimination. Our findings suggest that diagnostic category, illness severity, age and organ function are likely to significantly influence the probability of developing ARC and should be more regularly considered in future study design and daily prescribing practice. Specifically, these factors may be useful in identifying patients at risk of altered drug handling in critical illness. While additional PK data are required, these results

provide a robust basis on which to undertake larger clinical investigation, specifically focusing on the development of improved drug dosing algorithms in the critically ill.

Key messages

• Augmented renal clearance appears to be common in critically ill patients with normal plasma creatinine concentrations who are receiving antibacterial therapy in the ICU.

• Young trauma patients, without significant organ dysfunction, appear to be at greater risk.

• The correlation between cardiac index and urinary creatinine clearance is better in critically ill septic patients than in trauma patients.

• Minimally invasive pulse counter cardiac output monitoring may have a role in identifying critically ill septic patients with augmented renal clearance.

Abbreviations

AKI: acute kidney injury; APACHE: Acute Physiology and Chronic Health Evaluation; ARC: augmented renal clearance; AUC: area under the curve; BSA: body surface area; CI: cardiac index; CL: clearance; CL_{CR} : creatinine clearance; OR: odds ratio; PAC: pulmonary artery catheter; PK: pharmacokinetics; ROC: receiver operator characteristic; SIRs: systemic inflammatory response syndrome; SOFA: Sequential Organ Failure Assessment.

Authors' contributions

JL and JL conceived the study. JR, AU, RB and JL were involved in protocol development, ethics approval and implementation. AU and JR collected the data. AU, AS, and RB undertook the statistical analysis. AU wrote the initial draft, with all of the remaining authors contributing to subsequent revisions. AU takes responsibility for archiving the data and guarantees the integrity of the paper from inception to publication. All of the authors have read and approved the article for publication.

Competing interests

JL is a consultant to Astra Zeneca and Janssen-Cilag, and has received honoraria from Astra Zeneca, Janssen-Cilag and Wyeth Australia. JR has previously consulted for Janssen-Cilag, Astra-Zeneca, Pfizer and Gilead; has been involved in advisory boards for Janssen-Cilag and Astra-Zeneca; and has received unrestricted grants from Janssen-Cilag, Astra-Zeneca and Novartis. AS has acted as a speaker for, consulted to, or received grant support from: Astellas, Bayer, Forrest, Pfizer, Theravance, and Trius. AU and RB declare they have no conflicts of interest. Astra Zeneca and Edwards Lifesciences provide an annual un-restricted donation to the Burns, Trauma and Critical Care Research Centre (BTCCRC), University of Queensland.

Acknowledgements

This research was supported by a grant from the Australian National Health and Medical Research Council, Australia (NHMRC Project Grant 519702). AU was supported, in part, by a Royal Brisbane and Womens Hospital Research Scholarship. JR is supported, in part, by the Australian National Health and Medical Research Council (Australian Based Health Professional Research Fellowship 569917). The funding source had no role in data collection, manuscript preparation, nor the decision to submit for publication. Institution where the work was carried out: Department of Intensive Care Medicine, Level 4 James Mayne Building, Royal Brisbane and Womens Hospital, Herston Queensland, Australia, 4029.

Author details

¹Burns, Trauma, and Critical Care Research Centre, University of Queensland, Royal Brisbane and Womens Hospital, Butterfield Street, Herston 4029, Australia. ²Department of Intensive Care Medicine, Royal Brisbane and Womens Hospital, Butterfield Street, Herston 4029, Australia. ³Pharmacy

Department, Royal Brisbane and Womens Hospital, Butterfield Street, Herston 4029, Australia. ⁴Pulmonary and Critical Care Medicine, Washington Hospital Center, 110 Irving Street NW, Washington DC 20010, USA.

Received: 28 September 2012 Accepted: 28 February 2013

Published: 28 February 2013

References

1. Lipman J, Udy AA, Roberts JA: Do we understand the impact of altered physiology, consequent interventions and resultant clinical scenarios in the intensive care unit? The antibiotic story. *Anaesth Intensive Care* 2011, **39**:999-1000.
2. Roberts JA, Lipman J: Pharmacokinetic issues for antibiotics in the critically ill patient. *Crit Care Med* 2009, **37**:840-851.
3. Ibrahim EH, Sherman G, Ward S, Fraser VJ, Kollef MH: The influence of inadequate antimicrobial treatment of bloodstream infections on patient outcomes in the ICU setting. *Chest* 2000, **118**:146-155.
4. Kollef MH, Sherman G, Ward S, Fraser VJ: Inadequate antimicrobial treatment of infections: a risk factor for hospital mortality among critically ill patients. *Chest* 1999, **115**:462-474.
5. Kumar A, Roberts D, Wood KE, Light B, Parrillo JE, Sharma S, Suppes R, Feinstein D, Zanotti S, Taiberg L, Gurka D, Kumar A, Cheang M: Duration of hypotension before initiation of effective antimicrobial therapy is the critical determinant of survival in human septic shock. *Crit Care Med* 2006, **34**:1589-1596.
6. Udy AA, Roberts J, De Waele J, Paterson D, Lipman J: What's behind the failure of emerging antibiotics in the critically ill? Understanding the impact of altered pharmacokinetics and augmented renal clearance. *Int J Antimicrob Agents* 2012, **39**:455-457.
7. Udy AA, Roberts JA, Boots RJ, Paterson DL, Lipman J: Augmented renal clearance: implications for antibacterial dosing in the critically ill. *Clin Pharmacokinet* 2010, **49**:1-16.
8. Udy AA, Roberts JA, Lipman J: Implications of augmented renal clearance in critically ill patients. *Nat Rev Nephrol* 2011, **7**:539-543.
9. Udy AA, Putt MT, Shanmugathasan S, Roberts JA, Lipman J: Augmented renal clearance in the Intensive Care Unit: an illustrative case series. *Int J Antimicrob Agents* 2010, **35**:606-608.
10. Lipman J, Wallis SC, Boots RJ: Cefepime versus ceftazidime: the importance of creatinine clearance. *Anesth Analg* 2003, **97**:1149-1154.
11. Ambrose PG, Bhavnani SM, Ellis-Grosse EJ, Drusano GL: Pharmacokinetic-pharmacodynamic considerations in the design of hospital-acquired or ventilator-associated bacterial pneumonia studies: look before you leap! *Clin Infect Dis* 2010, **51**:S103-110.
12. Udy A, Boots R, Senthuran S, Stuart J, Deans R, Lassig-Smith M, Lipman J: Augmented creatinine clearance in traumatic brain injury. *Anesth Analg* 2010, **111**:1505-1510.
13. Conil JM, Georges B, Fourcade O, Seguin T, Lavit M, Samii K, Houin G, Tack I, Saivin S: Assessment of renal function in clinical practice at the bedside of burn patients. *Br J Clin Pharmacol* 2007, **63**:583-594.
14. Minville V, Asehnoun K, Ruiz S, Breden A, Seguin T, Georges B, Tack I, Jaafar A, Saivin S, Fourcade O, Samii K, Conil JM: Increased creatinine clearance in polytrauma patients with normal serum creatinine: a retrospective observational study. *Crit Care* 2011, **15**:R49.
15. Brown R, Babcock R, Talbert J, Gruenberg J, Czurak C, Campbell M: Renal function in critically ill postoperative patients: sequential assessment of creatinine osmolar and free water clearance. *Crit Care Med* 1980, **8**:68-72.
16. Conil JM, Georges B, Mimoz O, Dieye E, Ruiz S, Cougot P, Samii K, Houin G, Saivin S: Influence of renal function on trough serum concentrations of piperacillin in intensive care unit patients. *Intensive Care Med* 2006, **32**:2063-2066.
17. Udy AA, Varghese JM, Altkroni M, Briscoe S, McWhinney B, Ungerer J, Lipman J, Roberts JA: Sub-therapeutic initial beta-lactam concentrations in select critically ill patients: association between augmented renal clearance and low trough drug concentrations. *Chest* 2012, **142**:30-39.
18. Udy A, Roberts JA, Boots RJ, Lipman J: You only find what you look for: the importance of high creatinine clearance in the critically ill. *Anaesth Intensive Care* 2009, **37**:11-13.
19. Levey AS, Bosch JP, Lewis JB, Greene T, Rogers N, Roth D: A more accurate method to estimate glomerular filtration rate from serum creatinine: a new prediction equation. Modification of Diet in Renal Disease Study Group. *Ann Intern Med* 1999, **130**:461-470.

20. Cockcroft DW, Gault MH: **Prediction of creatinine clearance from serum creatinine.** *Nephron* 1976, **16**:31-41.
21. Baptista JP, Udy AA, Sousa E, Pimentel J, Wang L, Roberts JA, Lipman J: **A comparison of estimates of glomerular filtration in critically ill patients with augmented renal clearance.** *Crit Care* 2011, **15**:R139.
22. Martin JH, Fay MF, Udy A, Roberts J, Kirkpatrick C, Ungerer J, Lipman J: **Pitfalls of using estimations of glomerular filtration rate in an intensive care population.** *Intern Med J* 2011, **41**:537-543.
23. Pickering JW, Frampton CM, Walker RJ, Shaw GM, Endre ZH: **Four hour creatinine clearance is better than plasma creatinine for monitoring renal function in critically ill patients.** *Crit Care* 2012, **16**:R107.
24. Di Giantomasso D, May CN, Bellomo R: **Vital organ blood flow during hyperdynamic sepsis.** *Chest* 2003, **124**:1053-1059.
25. Wan L, Bellomo R, May CN: **A comparison of 4% succinylated gelatin solution versus normal saline in stable normovolaemic sheep: global haemodynamic, regional blood flow and oxygen delivery effects.** *Anaesth Intensive Care* 2007, **35**:924-931.
26. Di Giantomasso D, May CN, Bellomo R: **Norepinephrine and vital organ blood flow during experimental hyperdynamic sepsis.** *Intensive Care Med* 2003, **29**:1774-1781.
27. Dunlop W: **Serial changes in renal haemodynamics during normal human pregnancy.** *Br J Obstet Gynaecol* 1981, **88**:1-9.
28. Morgan P, Al-Subaie N, Rhodes A: **Minimally invasive cardiac output monitoring.** *Curr Opin Crit Care* 2008, **14**:322-326.
29. Roberts JA, Roberts MS, Semark A, Udy AA, Kirkpatrick CM, Paterson DL, Roberts MJ, Kruger P, Lipman J: **Antibiotic dosing in the 'at risk' critically ill patient: Linking pathophysiology with pharmacokinetics/ pharmacodynamics in sepsis and trauma patients.** *BMC Anesthesiol* 2011, **11**:3.
30. Bone RC, Balk RA, Cerra FB, Dellinger RP, Fein AM, Knaus WA, Schein RM, Sibbald WJ: **Definitions for sepsis and organ failure and guidelines for the use of innovative therapies in sepsis. The ACCP/SCCM Consensus Conference Committee. American College of Chest Physicians/Society of Critical Care Medicine.** *Chest* 1992, **101**:1644-1655.
31. Claus B, Colpaert K, Hoste EA, Decruyenaere J, De Waele J: **Increased glomerular filtration in the critically ill patient receiving anti-infective treatment.** *Crit Care* 2010, **14**:P509.
32. McKinnon PS, Paladino JA, Schentag JJ: **Evaluation of area under the inhibitory curve (AUC) and time above the minimum inhibitory concentration (T>MIC) as predictors of outcome for cefepime and ceftazidime in serious bacterial infections.** *Int J Antimicrob Agents* 2008, **31**:345-351.
33. Roberts JA, Kruger P, Paterson DL, Lipman J: **Antibiotic resistance—what's dosing got to do with it?** *Crit Care Med* 2008, **36**:2433-2440.
34. Robinson S, Zinck A, Strom T, Larsen TB, Rasmussen B, Toft P: **Enoxaparin, effective dosage for intensive care patients: double-blinded, randomised clinical trial.** *Crit Care* 2010, **14**:R41.
35. Thomas DM, Coles GA, Williams JD: **What does the renal reserve mean?** *Kidney Int* 1994, **45**:411-416.
36. Bosch JP, Saccaggi A, Lauer A, Ronco C, Belledonne M, Glabman S: **Renal functional reserve in humans. Effect of protein intake on glomerular filtration rate.** *Am J Med* 1983, **75**:943-950.
37. Fuster-Lluch O, Geronimo-Pardo M, Peyro-Garcia R, Lizan-Garcia M: **Glomerular hyperfiltration and albuminuria in critically ill patients.** *Anaesth Intensive Care* 2008, **36**:674-680.
38. Wan L, Bellomo R, May CN: **The effects of normal and hypertonic saline on regional blood flow and oxygen delivery.** *Anesth Analg* 2007, **105**:141-147.
39. Di Giantomasso D, Morimatsu H, Bellomo R, May CN: **Effect of low-dose vasopressin infusion on vital organ blood flow in the conscious normal and septic sheep.** *Anaesth Intensive Care* 2006, **34**:427-433.
40. Wiener RS, Welch HG: **Trends in the use of the pulmonary artery catheter in the United States, 1993-2004.** *JAMA* 2007, **298**:423-429.
41. Mayer J, Boldt J, Poland R, Peterson A, Manecke GR Jr: **Continuous arterial pressure waveform-based cardiac output using the FloTrac/Vigileo: a review and meta-analysis.** *J Cardiothorac Vasc Anesth* 2009, **23**:401-406.
42. Zimmermann A, Kufner C, Hofbauer S, Steinwendner J, Hitzl W, Fritsch G, Schistek R, Kirnbauer M, Pauser G: **The accuracy of the Vigileo/FloTrac continuous cardiac output monitor.** *J Cardiothorac Vasc Anesth* 2008, **22**:388-393.
43. Zimmermann A, Steinwendner J, Hofbauer S, Kirnbauer M, Schneider J, Moser L, Pauser G: **The accuracy of the Vigileo/FloTrac system has been improved—follow-up after a software update: a blinded comparative study of 30 cardiothoracic patients.** *J Cardiothorac Vasc Anesth* 2009, **23**:929-931.
44. McGee WT, Horswell JL, Calderon J, Janvier G, Van Severen T, Van den Berghe G, Kozikowski L: **Validation of a continuous, arterial pressure-based cardiac output measurement: a multicenter, prospective clinical trial.** *Crit Care* 2007, **11**:R105.
45. Lorsomradee S, Cromheecke S, De Hert SG: **Uncalibrated arterial pulse contour analysis versus continuous thermodilution technique: effects of alterations in arterial waveform.** *J Cardiothorac Vasc Anesth* 2007, **21**:636-643.
46. Giustiniano E, Morengi E, Ruggieri N, Pellegrino F, Balazova J, Dominoni C, Marinelli GL: **Cardiac output by FloTrac/Vigileo TM validation trials: are there reliable conclusions?** *Rev Recent Clin Trials* 2012, **7**:181-186.
47. Kim KE, Onesti G, Swartz C: **Creatinine clearance and glomerular filtration rate.** *Br Med J* 1972, **1**:379-380.
48. Herrera-Gutierrez ME, Sellar-Perez G, Banderas-Bravo E, Munoz-Bono J, Lebron-Gallardo M, Fernandez-Ortega JF: **Replacement of 24-h creatinine clearance by 2-h creatinine clearance in intensive care unit patients: a single-center study.** *Intensive Care Med* 2007, **33**:1900-1906.

doi:10.1186/cc12544

Cite this article as: Udy et al.: Augmented renal clearance in septic and traumatized patients with normal plasma creatinine concentrations: identifying at-risk patients. *Critical Care* 2013 **17**:R35.

**Submit your next manuscript to BioMed Central
and take full advantage of:**

- Convenient online submission
- Thorough peer review
- No space constraints or color figure charges
- Immediate publication on acceptance
- Inclusion in PubMed, CAS, Scopus and Google Scholar
- Research which is freely available for redistribution

Submit your manuscript at
www.biomedcentral.com/submit

