

RESEARCH

Open Access

Interleukin-6 is the strongest predictor of 30-day mortality in patients with cardiogenic shock due to myocardial infarction

René P Andrié^{*†}, Ulrich M Becher[†], Ricarda Frommold, Vedat Tiyerili, Jan W Schrickel, Georg Nickenig and Jörg O Schwab

Abstract

Introduction: Cardiogenic shock (CS) remains the leading cause of death in patients hospitalized for myocardial infarction (MI). Systemic inflammation with inappropriate vasodilatation is observed in many patients with CS and may contribute to an excess mortality rate. The purpose of this study was to determine the predictive role of serial measurements of Nt-proBNP, interleukin-6 (IL-6), and procalcitonin (PCT) for 30-day mortality in patients with CS due to MI.

Methods: The present study is a prospective single-center study including 87 patients with MI complicated by CS treated with acute revascularization and intraaortic balloon counterpulsation (IABP) support. Predictive values of plasma levels at admission (T_0), after 24 hours (T_1), and after 72 hours (T_2) were examined according to 30-day mortality.

Results: Significant differences between survivors ($n = 59$) and nonsurvivors ($n = 28$) were seen for Nt-proBNP at T_0 , for IL-6 at T_0 and T_1 , and for PCT at T_1 and T_2 . According to ROC analyses, the highest accuracy predicting 30-day mortality was seen at T_0 for IL-6, at T_1 for PCT, and at T_2 for PCT. In univariate analysis, significant values were found for Nt-proBNP at T_1 , and for IL-6 and PCT at all points in time. Within the multivariate analysis, age, creatinine, and IL-6 were significant determinants of 30-day mortality, in which IL-6 showed the highest level of significance.

Conclusions: In patients with MI complicated by CS, IL-6 represented a reliable independent early prognostic marker of 30-day mortality. PCT revealed a significant value at later points in time, whereas Nt-proBNP seemed to be of lower relevance.

Introduction

Cardiogenic shock (CS) complicating acute myocardial infarction (AMI) occurs in 5% to 10% of hospitalized patients and is the leading cause of intrahospital mortality after AMI [1,2]. Early revascularization of the infarct-related artery is the fundamental step in therapeutic strategies and has been shown to improve long-term survival in patients with CS [3,4]. However, some patients fail to show clinical and hemodynamic improvement, with a poor prognosis despite successful immediate revascularization.

In the classic pathophysiologic view, CS is the result of temporary and permanent disorders in the circulatory system [5]. New irreversible injury, reversible ischemia, and damage from prior infarction contribute to left ventricular dysfunction. N-terminal-pro-B-type natriuretic peptide (Nt-proBNP) is used for the early diagnosis of heart failure (HF) in patients with acute dyspnea [6]. In patients with chronic HF and AMI, Nt-proBNP is a reliable predictor of increased mortality [7]. In addition, elevated BNP levels in patients with septic shock are indicative of septic cardiomyopathy [8].

Systemic inflammation with inappropriate vasodilatation, as evidenced by a normal to low range of systemic vascular resistance, is observed in many patients with CS

* Correspondence: Rene.Andrie@ukb.uni-bonn.de

† Contributed equally

Department of Cardiology, University of Bonn, Sigmund-Freud-Str. 25, 53105 Bonn, Germany

and may contribute to an excess mortality rate [9]. Accordingly, it has been postulated that CS causes a systemic inflammatory response syndrome (SIRS) by the release of pro-inflammatory mediators like interleukin-6 (IL-6) and tumor necrosis factor alpha (TNF- α) [5]. Signs of systemic inflammation such as fever, leukocytosis, and elevated acute-phase reactants are frequently observed in patients with AMI and CS. High levels of systemic inflammation seem to be associated with impaired survival despite early revascularization [5]. It has been shown that patients with CS and multiorgan failure (MOF) exhibit concentrations of IL-6 of the same magnitude as do patients with septic shock [10,11].

Procalcitonin (PCT) is a well-established biomarker for the diagnosis of sepsis [12]. PCT reflects the severity of bacterial infection and is used to monitor progression of infection into sepsis, severe sepsis, or septic shock. Moreover, PCT is used to measure the activity of the systemic inflammatory response [12]. The increase of PCT in patients with sepsis correlates with mortality [12]. A limited number of studies have reported that increased levels of PCT are related to AMI [13,14].

In the present study, we analyzed the relation between plasma levels of Nt-proBNP, IL-6, and PCT at different points in time early after admission and 30-day mortality in patients with CS due to AMI, treated with immediate revascularization and IABP support. Moreover, central determinants of organ failure, hemodynamics, and revascularization were analyzed in relation to short-term prognosis and to levels of Nt-proBNP, IL-6, and PCT.

Materials and methods

Subjects

The present study is a prospective observational single-center study at a university hospital. Between 2008 and 2010, 87 patients with AMI complicated by CS at admission were included. The study complies with the Declaration of Helsinki and was approved by the local medical ethics committee. Patients or, in case of unconsciousness, relatives signed a consent form. Underlying causes of CS were categorized as ST-elevation myocardial infarction (STEMI) and non-ST-elevation myocardial infarction (NSTEMI). CS was defined by the presence of one of the following criteria: (a) peak systolic pressure <90 mm Hg for >30 minutes after the correction of hypovolemia, hypoxemia, and acidosis or need for vasopressor and/or inotropic therapy; (b) signs of organ hypoperfusion such as oliguria/anuria, changes in mental state, or elevated serum lactate concentrations (>2.0 mM). Patients with ongoing cardiopulmonary resuscitation (CPR) at admission were excluded from the study. Further exclusion criteria were age <18 years, immunosuppressive therapy, preexisting infectious diseases, mechanical assist devices other than an

intraaortic balloon counterpulsation (IABP), mechanical cardiac complications, and coronary artery bypass grafting (CABG) or any surgery in the last 4 weeks before onset of shock.

All patients were taken directly to the cardiac catheterization laboratory for angiography. All patients had undergone implantation of an IABP (Datascope System CS100 and CS100i, Datascope, Oakland, NJ, USA).

Based on the primary outcome variable all-cause mortality at day 30, analyses were performed to identify differences between survivors and nonsurvivors and predictors of worse outcome.

Hemodynamic measurements

Stroke volume (SV) and left ventricular ejection fraction (EF) were quantified invasively with levocardiography. If levocardiography could not be performed, EF was quantified with echocardiography. Cardiac output (CO) (L/min) was calculated as SV \times heart rate. Cardiac power output (CPO) (W) was calculated as mean arterial pressure (MAP) \times CO/451, left ventricular work (LVW) as (MAP - left ventricular end-diastolic pressure (LVEDP)) \times CO \times 0.0136 (kg-m/min), and systemic vascular resistance (SVR) (dyne s/cm⁵) as $80 \times$ (MAP - central venous pressure (CVP))/CO. Left ventricular work index (LVWI) (kg-m/min \times m²), cardiac power index (CPI) (W/m²), and systemic vascular resistance index (SVRI) (dyne s/cm⁵/m²) were computed by substituting CO with CI in the respective formulas. Stroke work (SW) (g-m) was calculated as (MAP - LVEDP) \times 0.0136 \times SV. Stroke work index (SWI) (g-m/m²) was determined by SW/body surface area. Microcirculatory power index (micPI) was calculated as CI \times (MAP-CVP) \times Hkt-factor.

Blood sampling

The first blood sample (T₀) was taken immediately after admission. The second blood sample (T₁) was taken after 24 hours, and the third blood sample (T₂), after 72 hours. Nt-proBNP (Siemens Healthcare Diagnostics GmbH, Munich, Germany), IL-6 (Siemens Healthcare Diagnostics GmbH) and PCT (Roche Diagnostics GmbH, Mannheim, Germany) were measured immediately. Further routine laboratory parameters were quantified by using commercially available assays.

Organ failure

Acute renal failure was defined as an increase of the serum creatinine concentration >2.5 mg/dl, an increase in creatinine >25% from baseline, a diuresis <500 ml/24 hours, or need for hemofiltration. Estimated glomerular filtration rate (eGFR) was calculated by using the Cockcroft and Gault formula. Systemic inflammatory response syndrome (SIRS) was defined by approved criteria [5].

Multiorgan failure (MOF) was defined as presence of two or more organ failures, other than cardiovascular. As scoring system of ICU mortality the APACHE II score was used.

Statistical analysis

Continuous variables are expressed as mean \pm standard deviation (SD) if normally distributed and as median (interquartile range) if not normally distributed. Continuous variables were tested for normal distribution with the use of the Kolmogorov-Smirnov test. The Student *t* test was performed for normally distributed continuous variables, and the Mann-Whitney *U* test for nonnormally distributed continuous variables. Testing for homogeneity of variance was performed with the Levene test. Categorical variables are given as frequencies and percentages, and the χ^2 test with the Fisher Exact test was used for data analysis. Receiver operating characteristics (ROC) curves were performed to determine cut-off levels of Nt-proBNP, IL-6, and PCT, with the highest sensitivity and specificity predicting 30-day mortality. The cumulative survival plots were estimated with the Kaplan-Meier method. Survival in groups was compared with the log-rank test. Univariate Cox regression analysis was performed to identify significant independent predictors of outcome.

For multivariate analysis, age, CPI, mean dose of catecholamines, lactate, creatinine, and IL-6 or PCT were included. For this analysis, a backward stepwise selection method was used. Results are reported as adjusted hazard ratio (HR) with 95% confidence interval (CI). A two-sided *P* value less 0.05 was considered statistically significant. Statistical analyses were performed by using SPSS software version 18.0 (SPSS, Chicago, IL, USA).

Results

Primary end point 30-day mortality

The overall 30-day mortality was 32.2% ($n = 28$ nonsurvivors, $n = 59$ survivors). No patient died in the catheterization laboratory. Six patients died before T_1 , and six further patients died before T_2 . Main cause of death was MOF. Mortalities showed no significant differences in STEMI versus NSTEMI patients, male versus female patients, or patients older than 75 years versus 75 years or younger (data not shown).

Baseline patient characteristics

Baseline patient characteristics of survivors and nonsurvivors are shown in Table 1. Age, percentage of patients receiving mechanical ventilation, serum lactate levels, hemoglobin, and serum creatinine differed significantly between the nonsurvivor and survivor groups. There were no further differences concerning patient characteristics and demographic data.

Diagnostic and therapeutic characteristics

All patients underwent coronary angiography immediately after admission. Diagnostic and therapeutic characteristics are summarized in Table 2. Percutaneous coronary intervention (PCI) was performed technically successfully in 77 (96.3%) patients, defined by a patent vessel with TIMI ≥ 2 flow, $<50\%$ residual stenosis, and no emergency CABG. Rates of successful PCI were similar in both groups (Table 2). The most common reasons for not attempting revascularization/surgery were a high-risk operation due to low ejection fraction, irreversible MOF, and coronary vessels not suitable for PCI or CABG. Rate of periinterventional CPR was significantly elevated in the nonsurvivor group.

Hemodynamic parameters and catecholamine support

Values of hemodynamic measurements at admission are illustrated in Table 3. For CPI, a significant difference was observed. In addition, MAP and systolic BP were reduced within the nonsurvivor group, whereas heart rate and maximal CVP within the first 24 hours were elevated in this group. Patients (68; 78.2%) required supportive catecholamine therapy within the first 24 hours, the more in the nonsurvivor group (Table 3).

Predictive value of Nt-proBNP, IL-6, and PCT for 30-day mortality

Main purpose of the present study was to determine the predictive value of serial measurements of Nt-proBNP, IL-6, and PCT for 30-day mortality. Medians (interquartile ranges) in all patients accounted for Nt-proBNP, 4,065 (1,147/9,775) pg/ml at T_0 , 3,588 (1,667/7,376) pg/ml at T_1 , and 2,409 (1,082/5,235) pg/ml at T_2 ; IL-6, 74.7 (18.1/255.5) pg/ml at T_0 , 46.5 (28.2/136.0) pg/ml at T_1 , and 26.8 (10.4/83.4) pg/ml at T_2 ; PCT, 0.25 (0.10/1.40) $\mu\text{g/L}$ at T_0 , 0.53 (0.10/1.68) $\mu\text{g/L}$ at T_1 , and 0.43 (0.15/0.90) $\mu\text{g/L}$ at T_2 . Significant differences between survivors and nonsurvivors were seen for Nt-proBNP at T_1 (2,831 versus 6,871 pg/ml; $P = 0.024$), for IL-6 at T_0 (30.7 versus 424.0 pg/ml; $P < 0.0001$), and T_1 (41.9 versus 79.1 pg/ml; $P = 0.015$), and for PCT at T_1 (0.46 versus 2.42 $\mu\text{g/L}$; $p = 0.001$) and T_2 (0.32 versus 1.44 $\mu\text{g/L}$; $P = 0.001$) (Figure 1). In contrast, for CRP, no statistical differences were seen (data not shown).

ROC curves calculated for Nt-proBNP, IL-6, and PCT at T_0 , T_1 , and T_2 are illustrated in Figure 2. At the earliest point in time, T_0 , only IL-6 was predictive of 30-day mortality; at T_1 , IL-6 and PCT showed significant *P* values, at T_2 PCT and Nt-proBNP were predictive of mortality. Comparing the area under the curve of the parameters at each point in time, the highest accuracy in predicting 30-day mortality was seen for IL-6 at T_0 , for PCT at T_1 , and for PCT at T_2 (Figure 2). Notably, the highest level of significance was found for IL-6 at T_0 . Based on these analyses, corresponding cut-off levels

Table 1 Baseline characteristics of study population according to outcome

	All patients(n = 87)	Survivors(n = 59)	Nonsurvivors(n = 28)	P value
Age (years)	67.78 ± 13.4	64.68 ± 14.3	74.32 ± 8.4	<0.0001
Age >75 years (%)	35 (40.2)	19 (32.2)	14 (50.0)	0.156
Male (%)	68 (78.2)	46 (78.0)	22 (78.6)	0.949
STEMI/NSTEMI (%)	44/43 (50.6/49.4)	30/29 (50.8/49.2)	14/14 (50.0/50.0)	0.941
Diabetes (%)	29 (33.3)	21 (35.6)	8 (28.6)	0.629
Hypertension (%)	53 (60.9)	37 (62.7)	16 (57.1)	0.645
Dyslipidemia (%)	43 (49.4)	31 (52.5)	12 (42.9)	0.493
Smoker (%)	31 (35.6)	23 (39.0)	8 (28.6)	0.473
Obesity (%)	20 (23.0)	15 (25.4)	5 (17.9)	0.587
BMI (kg/m ²)	27.6 ± 5.5	27.7 ± 5.8	27.2 ± 4.8	0.739
Family history (%)	11 (12.6)	7 (11.9)	4 (14.3)	0.741
CAD (%)	42 (48.3)	28 (47.5)	14 (50.0)	0.825
Previous MI (%)	25 (28.7)	17 (28.8)	8 (28.6)	0.981
Previous PCI (%)	24 (27.6)	17 (28.8)	7 (25.0)	0.801
Previous CABG (%)	6 (6.9)	4 (6.8)	2 (7.1)	0.950
Chronic heart failure (%)	11 (12.6)	8 (13.6)	3 (10.7)	0.978
Previous stroke (%)	10 (11.5)	8 (13.6)	2 (7.1)	0.490
Chronic renal failure (%)	10 (11.5)	5 (8.5)	5 (17.9)	0.281
Mechanical ventilation at admission (%)	43 (49.4)	28 (47.5)	15 (53.6)	0.651
Mechanical ventilation at any time (%)	62 (71.3)	36 (61.0)	26 (91.3)	0.013
Transferred patients (%)	39 (44.8)	29 (49.2)	10 (35.7)	0.259
Preclinical CPR (%)	23 (26.4)	16 (27.1)	7 (25.0)	0.834
Serum creatinine (mg/dl)	1.44 (1.17/2.10)	1.34 (1.09/1.58)	1.99 (1.45/3.45)	<0.0001
Hemoglobin (g/dl)	12.5 (10.5/14.4)	13.1 (11.1/14.9)	10.8 (10.0/13.5)	0.034
Troponin I (ng/ml)	14.7 (2.9/62.5)	9.1 (1.9/54.4)	21.0 (9.0/77.0)	0.069
Blood glucose (mg/dl)	199.0 ± 129.9	201.3 ± 142.1	193.3 ± 96.5	0.942
Serum lactate (mM)	1.9 (1.1/6.0)	1.4 (1.1/3.2)	5.8 (1.6/12.7)	0.008

Values are expressed as *n* (%), or mean ± SD. BMI, body mass index; CABG, coronary artery bypass grafting; CAD, coronary artery disease; CPR, cardiopulmonary resuscitation; MI, myocardial infarction; NSTEMI, non-ST-elevation myocardial infarction; PCI, percutaneous coronary intervention; STEMI, ST-elevation myocardial infarction.

with highest sensitivity and specificity were calculated: T₀ IL-6, 307 pg/ml (sensitivity, 57.1%; specificity, 97.7%); T₁ PCT, 1.23 µg/L (sensitivity, 83.3%; specificity, 81.4%); T₂ PCT, 0.71 µg/L (sensitivity, 90.0%; specificity, 82.9%). Based on these cut-off levels, 30-day survival rates of patients according to Kaplan-Meier analyses differed highly significantly (Figure 3). Survival of patients with IL-6 levels below the cut-off value was significantly improved compared with that of patients with IL-6 levels above the cut-off value, irrespective of the presence of SIRS (*P* < 0.05).

Organ failure as predictor of 30-day mortality

Acute kidney injury (AKI) occurred in 31 (35.6%) patients. AKI appeared significantly more frequent in nonsurvivors (67.9%) compared with survivors (20.7%; *P* < 0.0001). Serum creatinine at admission (1.99 (1.45/3.45) mg/dl versus 1.34 (1.09/1.58) mg/dl) and eGFR (38.2 ± 19.4 ml/min versus 67.7 ± 31.5 ml/min) after the first 24 hours also differed significantly between the groups (*P* < 0.0001). The incidence of MOF was increased dramatically in the

nonsurvivor group (60.7% versus 6.8%; *P* < 0.0001). According to Kaplan-Meier analyses, the overall 30-day survival rate of patients with MOF was markedly lower than that of patients without MOF (15.0% versus 84.8%; *P* < 0.0001 by log-rank test). The overall survival rate of patients with an APACHE II score above the median was in trend lower than that of patients below this cutoff (62.9% versus 81.8%; *P* = 0.065). Initial serum lactate as a marker for organ hypoperfusion was clearly elevated within the nonsurvivor group (5.8 (1.6/12.7) mM versus 1.4 (1.1/3.2) mM; *P* < 0.01).

Univariate and multivariate analyses of predictors for 30-day mortality

In univariate analysis, significant values were found for Nt-proBNP at T₁, for IL-6 at all points in time, and for PCT also at all points in time (Table 4). Further significant predictors are shown in Table 4. Within the multivariate analysis including age, CPI at admission, total mean dose of catecholamines within first 24 hours, lactate at admission, creatinine at admission, IL-6 at

Table 2 Procedural characteristics of study population according to outcome

	All patients(n = 87)	Survivors(n = 59)	Nonsurvivors(n = 28)	P value
EF (%)	35.2 ± 11.6	34.7 ± 11.6	36.4 ± 11.9	0.548
EF <30% (%)	24 (27.6)	16 (27.1)	9 (32.1)	0.789
Three-vessel disease (%)	51 (58.6)	34 (57.6)	17 (60.7)	0.814
Infarct artery				
Left main (%)	6 (6.9)	4 (6.8)	2 (7.1)	0.950
Left anterior descending (%)	43 (49.4)	29 (49.2)	14 (49.2)	0.941
Right coronary artery (%)	21 (24.1)	13 (22.0)	8 (28.6)	0.691
Left circumflex (%)	24 (27.6)	15 (25.4)	9 (32.1)	0.690
Bypass graft (%)	1 (1.1)	1 (1.7)	0 (0)	0.488
Revascularization procedure (PCI or CABG) (%)	82 (94.3)	57 (96.6)	25 (89.3)	0.323
PCI left main (%)	12 (13.8)	10 (16.9)	2 (7.1)	0.323
PCI success (%)	77 (96.3)	55 (96.5)	22 (95.7)	0.858
CABG (%)	2 (2.3)	0 (0%)	2 (7.1)	0.091
Number of treated vessels	1.26 ± 0.54	1.26 ± 0.48	1.25 ± 0.68	0.932
Time to reperfusion (hours)	6.1 ± 5.2	5.6 ± 4.6	7.3 ± 5.9	0.072
Duration of IABP support (hours)	54.5 ± 24.0	55.4 ± 20.8	52.1 ± 31.3	0.654
TIMI flow before PCI	0.51 ± 0.67	0.51 ± 0.67	0.50 ± 0.71	0.958
TIMI flow after PCI	2.77 ± 0.57	2.82 ± 0.51	2.67 ± 0.70	0.343
CPR periinterventional (%)	12 (13.8)	5 (8.5)	7 (25.0)	0.040

Values are expressed as *n* (%), or mean ± SD. CABG, coronary artery bypass graft; CPR, cardiopulmonary resuscitation; EF, ejection fraction; IABP, intraaortic balloon counterpulsation; PCI, percutaneous coronary intervention; TIMI, thrombolysis in myocardial infarction.

Table 3 Hemodynamics and catecholamine support according to outcome

	All patients(n = 87)	Survivors(n = 59)	Nonsurvivors(n = 28)	P value
Hemodynamics				
CI (L/min/m ²)	2.15 ± 0.83	2.16 ± 0.78	2.12 ± 0.93	0.825
CPI (W/m ²)	0.35 ± 0.15	0.37 ± 0.15	0.30 ± 0.15	0.041
CPO (W)	0.67 ± 0.26	0.70 ± 0.27	0.60 ± 0.25	0.102
Microcirculatory PI	97.51 ± 46.17	101.74 ± 43.08	86.23 ± 53.22	0.181
SV (ml)	52.6 ± 16.5	54.7 ± 16.8	48.1 ± 15.4	0.078
SVI (ml/m ²)	26.8 ± 9.4	28.0 ± 9.0	24.3 ± 9.8	0.105
SW (g m)	37.5 ± 18.5	39.4 ± 18.6	31.7 ± 17.5	0.121
SWI (g m/m ²)	19.1 ± 10.2	20.2 ± 10.1	16.0 ± 10.2	0.137
LWV (kg m/min)	2.88 ± 1.35	2.97 ± 1.35	2.60 ± 1.37	0.327
LWVI (kg m/min/m ²)	1.47 ± 0.77	1.53 ± 0.74	1.30 ± 0.84	0.320
SVR (dynes sec/cm ⁵)	1,251.8 ± 672.9	1,285.3 ± 705.6	1,146.6 ± 566.9	0.444
SVRI (dynes sec/cm ⁵ /m ²)	2,281.6 ± 898.2	2,302.9 ± 894.2	2,216.2 ± 938.8	0.756
MAP (mm Hg)	71.1 ± 15.0	74.8 ± 13.7	63.8 ± 14.9	0.002
Min. MAP (mm Hg) day 1	55.1 ± 13.1	58.9 ± 10.9	45.8 ± 13.7	0.001
Systolic BP (mm Hg)	94.8 ± 22.7	98.6 ± 21.7	85.5 ± 23.0	0.036
Min. systolic BP (mm Hg) day 1	70.9 ± 17.7	75.8 ± 15.7	59.0 ± 16.8	0.001
LVEDP (mm Hg)	23.1 ± 8.9	22.9 ± 9.3	23.7 ± 8.1	0.748
CVP (mm Hg)	12.7 ± 5.8	12.2 ± 5.0	13.8 ± 7.6	0.416
Max. CVP (mm Hg) day 1	19.0 ± 8.3	17.2 ± 7.4	23.9 ± 8.9	0.008
HR (beats/min)	82.1 ± 21.2	78.7 ± 19.4	89.4 ± 23.2	0.043
Min. HR (beats/min) day 1	59.0 ± 17.3	56.4 ± 13.7	65.5 ± 23.3	0.115
Max. HR (beats/m) day 1	123.2 ± 25.3	118.8 ± 23.8	134.0 ± 26.2	0.032
Scvo ₂ (%)	66.3 ± 16.9	67.6 ± 16.5	63.2 ± 18.0	0.378
Min. Scvo ₂ (%) day 1	56.3 ± 13.5	56.2 ± 12.4	56.7 ± 16.3	0.905
Inotropic and vasopressor support				
Catecholamine use (%)	68 (78.2%)	43 (72.9)	25 (89.3)	0.101

Table 3 Hemodynamics and catecholamine support according to outcome (Continued)

Dobutamine use (%)	52 (59.8)	33 (55.9)	20 (71.4)	0.240
Mean dose of dobutamine (µg/min) day 1	500 (0/975)	250 (0/700)	950 (0/1,075)	0.021
Norepinephrine use (%)	64 (73.6)	39 (66.1)	25 (89.3)	0.036
Mean dose of nor-epinephrine (µg/min) day 1	10 (0/61)	3 (0/15)	100 (40/130)	<0.0001
Epinephrine use (%)	25 (28.7)	8 (13.6)	18 (64.3)	<0.0001
Mean dose of epinephrine (µg/min) day 1	0 (0/0.5)	0 (0/0)	15 (0/80)	<0.0001
Total number of catecholamines	2.0 (1.0/2.0)	2.0 (0.0/2.0)	3.0 (2.0/3.0)	0.001
Total mean dose of catecholamines (µg/min) day 1	503 (0.6/1013)	305 (0/706)	995 (165/1310)	0.006

Values are expressed as *n* (%), mean ± SD, or median with interquartile range (quartile 1 to quartile 3). Beats/min, beats per minute; BP, blood pressure; CI, cardiac index; CO, cardiac output; CPI, cardiac power index; CPO, cardiac power output; CVP, central venous pressure; HR, heart rate; LVEDP, left ventricular end-diastolic pressure; LVW, left ventricular work; LVWI, left ventricular work index; MAP, mean arterial pressure; max, maximal; min, minimal; ScvO₂, central venous oxygen saturation; SV, stroke volume; SVI, stroke volume index; SVR, systemic vascular resistance; SVRI, systemic ventricular resistance index; SW, stroke work; SWI, stroke work index.

admission, and PCT at admission, age, creatinine, and IL-6 were significant determinants of 30-day mortality in which IL-6 showed the highest level of significance (Table 5).

Discussion

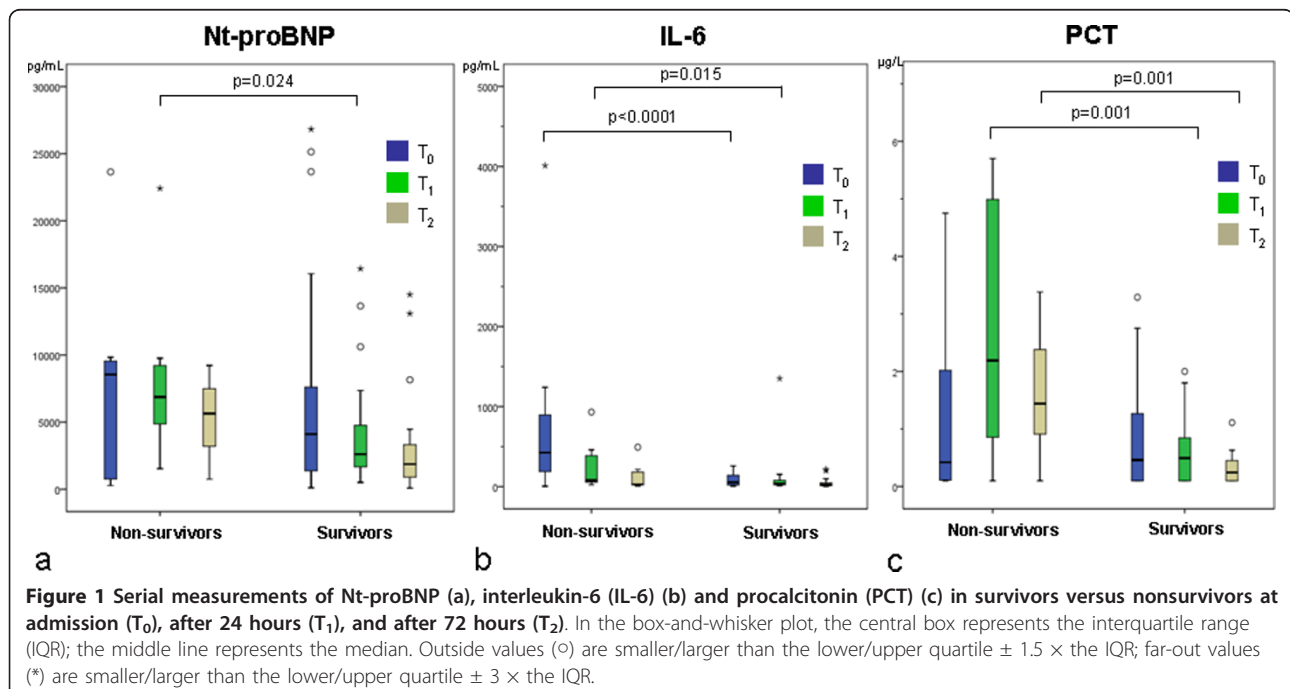
The aim of the present study was to analyze the predictive value of a broad spectrum of clinical and laboratory parameters in patients with CS due to AMI treated with immediate revascularization. To the best of our knowledge, this is the first prospective investigation in the early phase of AMI and CS analyzing serial measurements of Nt-proBNP, IL-6, and PCT as predictors of 30-day mortality.

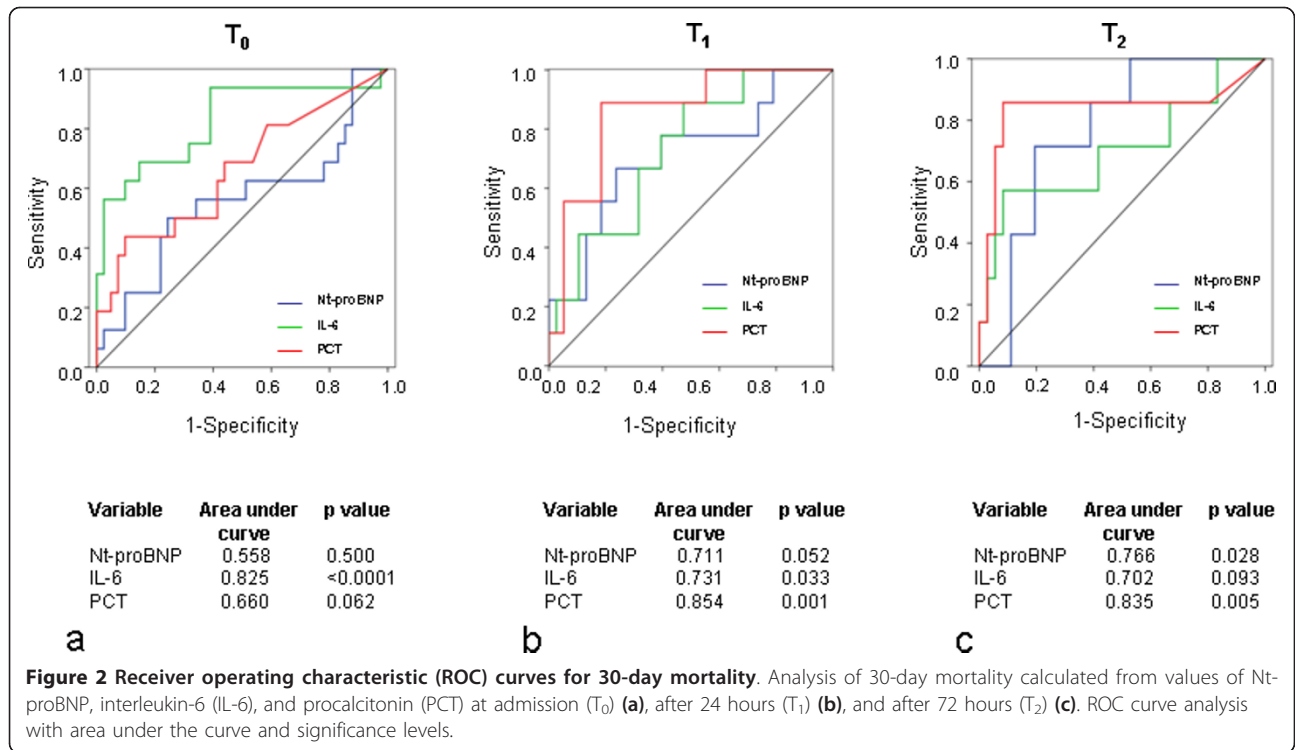
Growing evidence indicates that an aggressive strategy based on immediate coronary revascularization and IABP support is the most effective therapy for CS due

to AMI [2,5]. Characteristics of our study population were similar to those of the patients undergoing revascularization in the Should We Emergently Revascularize Occluded Coronaries for Cardiogenic Shock (SHOCK) trial [15]. The present study was based on a therapy strategy that included urgent revascularization and support by an IABP. In contrast to the SHOCK trial, the predominant proportion of patients was revascularized by PCI with a high success rate and revealed a 30-day mortality of 32%, an incidence lower than that reported in the SHOCK trial [15].

Nt-proBNP, IL-6, and PCT as predictors of outcome

The measurement of serum levels of natriuretic peptides is established in the diagnosis and follow-up of chronic HF. Maisel *et al.* [6] showed that BNP may be helpful in





diagnosing acute HF in the emergency setting. Moreover, Nt-proBNP has been suggested as a useful marker of high risk in acute myocardial infarction. Higher baseline levels of BNP in patients presenting with STEMI were associated with impairment of reperfusion after fibrinolytic therapy, whereas patients in the highest

BNP-concentration quartile had an 11-fold risk of dying by 30 days [16]. Similarly, Nt-proBNP was previously shown to be predictive of myocardial damage, development of CS, and short- and long-term mortality [17,18]. Data concerning the predictive value of serial Nt-proBNP measurements in patients with manifest CS due

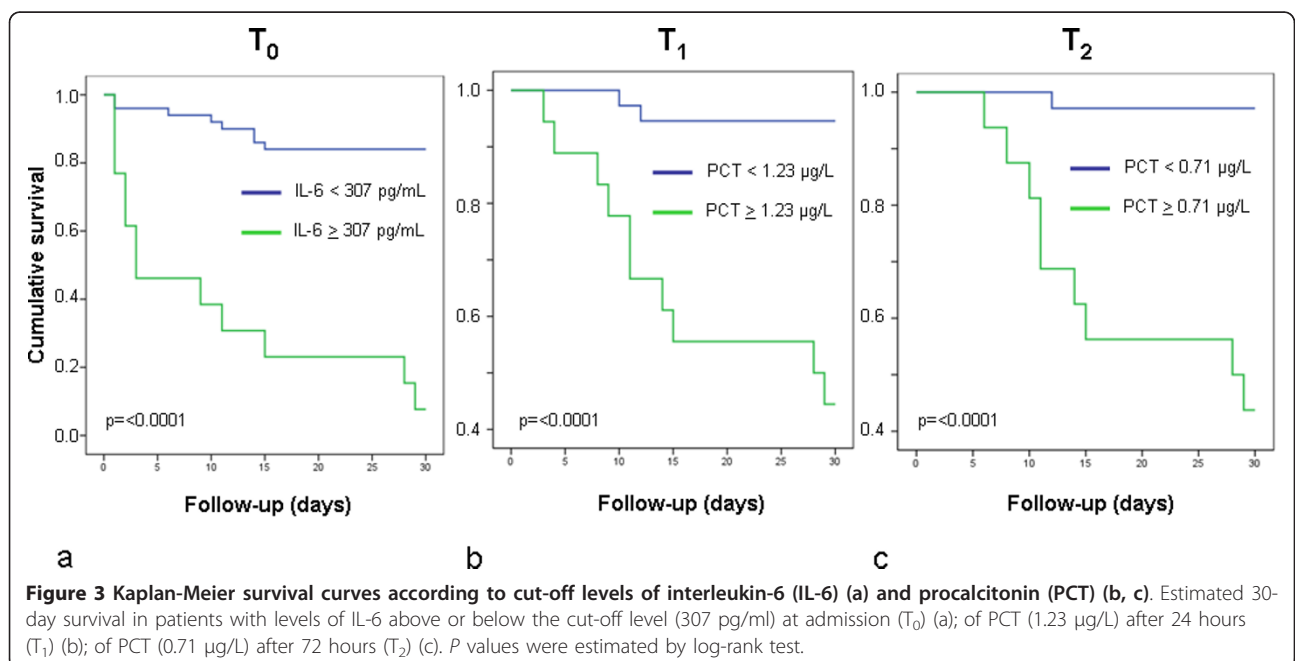


Table 4 Univariate analysis predicting 30-day mortality

	HR (95% CI)	P value
Patient characteristics		
Age, per 10 years	1.638 (1.174-2.285)	0.004
EF, per 5%	1.061 (0.887-1.269)	0.516
Left main	2.143 (0.504-9.117)	0.302
STEMI	1.005 (0.479-2.108)	0.989
Mechanical ventilation	1.313 (0.625-2.762)	0.472
Hemodynamics and catecholamines		
CO, L/min	0.986 (0.760-1.279)	0.915
CI, L/min/m ²	0.934 (0.594-1.468)	0.768
CPI, 0.1 W/m ²	0.766 (0.593-0.991)	0.043
CPO, 0.1 W	0.874 (0.747-1.023)	0.094
Microcirculatory PI/10	0.888 (0.795-0.992)	0.036
SVRI, 100 dynes sec/cm ⁵ /m ²	0.992 (0.937-1.050)	0.776
MAP, 5 mm Hg	0.821 (0.726-0.928)	0.002
Heart rate, 5 beats/min	1.086 (1.003-1.176)	0.041
Catecholamine use	3.073 (0.716-13.198)	0.131
Total number of catecholamines	2.332 (1.350-4.029)	0.002
Mean dose of catecholamines, 10 µg/min	1.014 (1.004-1.024)	0.006
Organ failure		
Acute kidney injury	5.084 (2.290-11.290)	<0.0001
SIRS	1.412 (0.639-3.121)	0.394
MOF	8.317 (3.754-18.425)	<0.0001
Lactate, mM	1.164 (1.086-1.247)	<0.0001
APACHE II > Median	2.390 (0.908-6.294)	0.078
Laboratory measurements		
Creatinine T ₀ , mg/dl	1.299 (1.092-1.546)	0.003
Creatinine T ₁ , mg/dl	2.155 (1.534-3.028)	<0.0001
Creatinine T ₂ , mg/dl	1.562 (0.626-3.901)	0.339
Nt-proBNP T ₀ , 1,000 pg/ml	1.022 (0.988-1.056)	0.204
Nt-proBNP T ₁ , 1,000 pg/ml	1.111 (1.045-1.182)	0.001
Nt-proBNP T ₂ , 1,000 pg/ml	1.109 (0.959-1.282)	0.161
IL-6 T ₀ , 100 pg/ml	1.019 (1.008/1.030)	0.001
IL-6 T ₁ , 100 pg/ml	1.134 (1.023-1.257)	0.016
IL-6 T ₂ , 100 pg/ml	1.550 (1.031-2.331)	0.035
PCT T ₀ , µg/L	1.368 (1.075-1.741)	0.011
PCT T ₁ , µg/L	1.266 (1.122-1.429)	<0.0001
PCT T ₂ , µg/L	2.980 (1.687-5.265)	<0.0001

IL-6, interleukin-6; MOF, multiorgan failure; Nt-proBNP, N-terminal pro-B-type natriuretic peptide; PCT, procalcitonin; SIRS, systemic inflammatory response syndrome; other abbreviations as in Tables 1 through 3.

to AMI are rare. In the present study, the survivor group showed a decline of Nt-proBNP levels within 72 hours, whereas in the nonsurvivor group, maximum levels were reached after 24 hours. Significant differences of Nt-proBNP were found only after 24 hours between survivors and nonsurvivors. Notably, Nt-proBNP revealed no predictive value for the development of MOF. In a retrospective study with 58 patients with CS largely secondary to AMI, initial Nt-proBNP levels above the median were associated with worsened outcome [19]. However, Nt-proBNP levels were not analyzed serially. Next to the retrospective study design, the

number of patients was small in particular if the cohort was further subdivided. Among the 47 patients who had AMI as the primary cause of CS, only in 33 patients was coronary revascularization performed, with a success rate of 85% [19]. In our study, revascularization was attempted in 94% of patients, with a success rate of 96%, and an IABP was placed in all patients.

In patients with septic shock, IL-6 levels have been shown to correlate with disease severity and outcome [20]. However, elevations are not sepsis specific. It has been shown that patients with CS and manifest MOF exhibit similarly high IL-6 levels, as in patients with

Table 5 Multivariate Cox proportional hazard ratios for 30-day mortality

	Hazard ratios (95% CI)	P value
Age, per 10 years	3.372 (1.548-7.348)	0.002
CPI, 0.1 W/m ²	0.790 (0.506-1.231)	0.297
Mean dose of catecholamines, 10 µg/min	1.013 (0.997-1.028)	0.116
Lactate T ₀ , mM	1.007 (0.839-1.209)	0.939
Creatinine T ₀ , mg/dl	1.589 (1.033-2.444)	0.035
IL-6 T ₀ , 100 pg/ml	1.036 (1.017-1.055)	<0.0001
PCT T ₀ , µg/L	1.236 (0.843-1.812)	0.277

Abbreviations as in Tables 1 through 4.

septic shock [10]. In the setting of AMI, IL-6 was identified as independent prognostic marker [21]. In the present study, IL-6 levels differed significantly between the survivor and nonsurvivor groups at the early points in time, in which the values at admission showed an impressive discrepancy. In accordance with that, univariate analysis confirmed the predictive value of IL-6 for 30-day mortality at the early points in time. IL-6 levels at admission revealed the highest level of significance within the ROC analyses. A cut-off level of 307 pg/ml showed a very clear differentiation between survivors and nonsurvivors within the Kaplan-Meier curves, associated with a very high specificity of 98%. Moreover, in contrast to Nt-proBNP, IL-6 levels at T₀ and T₁ were predictive for occurrence of MOF. Our data confirm the results of a small retrospective study with only initial measurements of IL-6 that also showed an independent predictive value of IL-6 for 30-day mortality [11]. It is hypothesized that next to ischemic myocardium, whole body ischemia, endotoxin translocation from the gut, excessive vasopressor therapy, and noncardiac organ failure are also contributing factors to IL-6 release [22]. Possibly, IL-6 constitutes not only an innocent bystander of inflammatory activation, but also might be an aggravating factor because IL-6 determines negative inotropic effects on the myocardium [23].

Several studies have demonstrated that elevated levels of PCT indicate bacterial infection accompanied by a systemic inflammatory reaction [12]. Nevertheless, PCT elevation has been documented in infection-independent systemic inflammatory reactions. In recent studies, PCT levels were found to correlate with the extent of coronary artery disease and adverse outcome [24]. In a retrospective study, CS patients showed high PCT concentrations, especially in the presence of MOF and in the absence of signs of infection [25]. In a further investigation, PCT values were significantly higher in CS patients compared with patients with uncomplicated AMI [26]. The prognostic relevance of PCT in CS was not evaluated. In our study, both survivors and nonsurvivors reached maximum levels

of PCT at T₁. Significant differences between the two groups were seen at T₁ and T₂ and were strongly associated with outcome. ROC analysis showed the highest accuracy of predicting 30-day mortality for PCT at T₁ and T₂ with a sensitivity and specificity between 80% and 90%. Notably, when comparing the area under the curve of Nt-proBNP, IL-6, and PCT, at all points in time, PCT at T₁ showed the highest value.

Hemodynamics and organ failure as predictors of outcome

Hemodynamic data, including CO and pulmonary wedge pressure, were shown to be the strongest predictors of death in the GUSTO CS trial [27]. In a retrospective analysis from the SHOCK trial registry, CPI was the strongest predictor of mortality [28]. In our study, hemodynamic measurements also showed a predictive value of CPI in the univariate but not multivariate analysis.

Impaired renal function is one of the strongest risk factors for cardiovascular mortality. In a retrospective analysis in patients with CS due to AMI, 33% developed an AKI within 24 hours of shock onset and showed a significantly higher mortality rate than did patients without AKI [29]. In a recent prospective study of STEMI patients with CS, AKI occurred in 55% of patients, and the in-hospital mortality rate was significantly higher in patients developing AKI than in patients without AKI [30]. In our study with STEMI and also NSTEMI patients, AKI occurred in 36% of patients during first 72 hours after admission. All measured parameters of renal insufficiency were clearly associated with worse outcome.

Irreversible MOF is the main cause of death in CS. Until now, only a few studies addressed the issue of MOF in patients with CS. In a small study, 35% of patients with CS exhibited MOF at admission categorized by the SOFA score, and an additional 20% developed MOF later during the clinical stay [10]. In our study, 24% of patients fulfilled criteria of MOF with a highly significant difference to the disadvantage of nonsurvivors.

IL-6 is the strongest independent predictor of 30-day mortality

As the central finding of our study, multivariate analysis including age, creatinine, lactate, CPI, mean dose of catecholamines, and IL-6 or PCT showed independent predictive values for age, creatinine, and IL-6, in which IL-6 reached the highest level of significance. Therefore, IL-6 might be a useful marker to identify very early CS patients who are at high risk of worse outcome. In contrast, the relevance of Nt-proBNP as an early prognostic marker must be challenged. PCT showed also a highly significant impact but primarily after the very early phase of AMI and CS.

Conclusions

The present study demonstrates that in patients with AMI and CS treated with immediate revascularization and IABP, the destination of IL-6 at admission reliably predicts 30-day mortality. For clinical practice, it is noticeable that a cut-off level of 307 pg/ml is associated with a very high specificity but moderate sensitivity. In contrast, Nt-proBNP seemed to be of lower relevance.

In conclusion, selective measurements of circulating inflammatory markers allow early prognostic estimation of patients with CS due to AMI. Potential therapeutic and prognostic interventions modulating the systemic inflammatory reaction have to be analyzed in further studies.

Key messages

- Systemic inflammation is observed in many patients with cardiogenic shock due to myocardial infarction.
- Interleukin-6 represents a reliable independent very early prognostic marker of 30-day mortality with high specificity.
- Procalcitonin is a very reliable predictor of 30-day mortality 24 and 72 hours after admission, with high sensitivity and specificity.

Abbreviations

AMI: acute myocardial infarction; CABG: coronary artery bypass graft; CPR: cardiopulmonary resuscitation; CS: cardiogenic shock; IL-6: interleukin-6; MOF: multiorgan failure; NSTEMI: non-ST-elevation myocardial infarction; Nt-proBNP: N-terminal pro-B-type natriuretic peptide; PCI: percutaneous coronary intervention; PCT: procalcitonin; SIRS: systemic inflammatory response syndrome; STEMI: ST-elevation myocardial infarction.

Authors' contributions

RPA, UMB, GN, and JOS participated in the conception and design or analysis and interpretation of data. RPA, UMB, RF, VT, JWS, GN, and JOS drafted the manuscript or revised it critically for important intellectual content. RPA, UMB, GN, and JOS gave final approval of the manuscript. All authors read and approved the manuscript for publication.

Competing interests

The authors declare that they have no competing interests.

Received: 21 March 2012 Revised: 24 July 2012

Accepted: 13 August 2012 Published: 13 August 2012

References

1. Babaev A, Frederick PD, Pasta DJ, Every N, Sichrovsky T, Hochman JS: Trends in management and outcomes of patients with acute myocardial infarction complicated by cardiogenic shock; NRM Investigators. *JAMA* 2005, **294**:448-454.
2. Goldberg RJ, Spencer FA, Gore JM, Lessard D, Yarzebski J: Thirty-year trends (1975 to 2005) in the magnitude of, management of, and hospital death rates associated with cardiogenic shock in patients with acute myocardial infarction: a population-based perspective. *Circulation* 2009, **119**:1211-1219.
3. Hochman JS, Sleeper LA, White HD, Dzavik V, Wong SC, Menon V, Webb JG, Steingart R, Picard MH, Menegus MA, Boland J, Sanborn T, Buller CE, Modur S, Forman R, Desvigne-Nickens P, Jacobs AK, Slater JN, LeJemtel TH: SHOCK Investigators: Should We Emergently Revascularize Occluded Coronaries for Cardiogenic Shock: one-year survival following early revascularization for cardiogenic shock. *JAMA* 2001, **285**:190-192.
4. Hochman JS, Sleeper LA, Webb JG, Dzavik V, Buller CE, Aylward P, Col J, White HD, for the SHOCK Investigators: Early revascularization and long-term survival in cardiogenic shock complicating acute myocardial infarction. *JAMA* 2006, **295**:2511-2515.
5. Reynolds HR, Hochman JS: Cardiogenic shock: current concepts and improving outcomes. *Circulation* 2008, **117**:686-697.
6. Maisel AS, Krishnaswamy P, Nowak RM, McCord J, Hollander JE, Duc P, Omland T, Storrow AB, Abraham WT, Wu AH, Clopton P, Steg PG, Westheim A, Knudsen CW, Perez A, Kazanegra R, Herrmann HC, McCullough PA, Breathing Not Properly Multinational Study Investigators: Rapid measurement of B-type natriuretic peptide in the emergency diagnosis of heart failure. *N Engl J Med* 2002, **347**:161-167.
7. Heeschen C, Hamm CW, Mitrovic V, Lantelme NH, White HD, Platelet Receptor Inhibition in Ischemic Syndrome Management (PRISM) Investigators: N-terminal pro-B-type natriuretic peptide levels for dynamic risk stratification of patients with acute coronary syndromes. *Circulation* 2004, **110**:3206-3212.
8. Rudiger A, Gasser S, Fischler M, Hornemann T, von Eckardstein A, Maggiorini M: Comparable increase of B-type natriuretic peptide and amino-terminal pro-B-type natriuretic peptide levels in patients with severe sepsis, septic shock, and acute heart failure. *Crit Care Med* 2006, **34**:2140-2144.
9. Kohsaka S, Menon V, Lowe AM, Lange M, Dzavik V, Sleeper LA, Hochman JS: Systemic inflammatory response syndrome after acute myocardial infarction complicated by cardiogenic shock. *Arch Intern Med* 2005, **165**:1643-1650.
10. Geppert A, Steiner A, Zorn G, Delle-Karth G, Koreny M, Haumer M, Siostrzonek P, Huber K, Heinz G: Multiple organ failure in patients with cardiogenic shock is associated with high plasma levels of interleukin-6. *Crit Care Med* 2002, **30**:1987-1994.
11. Geppert A, Dorninger A, Delle-Karth G, Zorn G, Heinz G, Huber K: Plasma concentrations of interleukin-6, organ failure, vasopressor support, and successful coronary revascularization in predicting 30-day mortality of patients with cardiogenic shock complicating acute myocardial infarction. *Crit Care Med* 2006, **34**:2035-2042.
12. Becker KL, Snider R, Nylen ES: Procalcitonin assay in systemic inflammation, infection, and sepsis: clinical utility and limitations. *Crit Care Med* 2008, **36**:941-952.
13. Bektas F, Soyuncu S, Gunduz I, Basarici I, Akbas H, Eken C: The value of procalcitonin, a novel inflammatory marker, in the diagnosis of myocardial infarction and evaluation of acute coronary syndrome patients. *J Emerg Med* 2011, **41**:524-530.
14. Kafkas N, Venetsanou K, Patsilinas S, Voudris V, Antonatos D, Kelesidis K, Baltopoulos G, Maniatis P, Cokkinos DV: Procalcitonin in acute myocardial infarction. *Acute Card Care* 2008, **10**:30-36.
15. Hochman JS, Sleeper LA, Webb JG, Sanborn TA, White HD, Talley JD, Buller CE, Jacobs AK, Slater JN, Col J, McKinlay SM, LeLemtel TH: Early revascularization in acute myocardial infarction complicated by cardiogenic shock. *N Engl J Med* 1999, **341**:625-634.
16. Mega JL, Morrow DA, De Lemos JA, Sabatine MS, Murphy SA, Rifai N, Gibson CM, Antman EM, Braunwald E: B-type natriuretic peptide at presentation and prognosis in patients with ST-segment elevation myocardial infarction: an ENTIRE-TIMI-23 substudy. *J Am Coll Cardiol* 2004, **44**:335-339.
17. Ndrepepa G, Braun S, Mehilli J, von Beckerath N, Nekolla S, Vogt W, Schwaiger M, Schömig A, Kastrati A: N-terminal pro-brain natriuretic peptide on admission in patients with acute myocardial infarction and correlation with scintigraphic infarct size, efficacy of reperfusion, and prognosis. *Am J Cardiol* 2006, **97**:1151-1156.
18. Vergès B, Zeller M, Desgrès J, Dentan G, Laurent Y, Janin-Manificat L, L'Huillier I, Rioufol G, Beer JC, Makki H, Rochette L, Gamber P, Cottin Y: High plasma N-terminal pro-brain natriuretic peptide level found in diabetic patients after myocardial infarction is associated with an increased risk of in-hospital mortality and cardiogenic shock. *Eur Heart J* 2005, **26**:1734-1741.
19. Jarai R, Fellner B, Haoula D, Jordanova N, Heinz G, Karth GD, Huber K, Geppert A: Early assessment of outcome in cardiogenic shock: relevance of plasma N-terminal pro-B-type natriuretic peptide and interleukin-6 levels. *Crit Care Med* 2009, **37**:1837-1844.

20. Pinsky MR, Vincent JL, Deviere J, Alegre M, Kahn RJ, Dupont E: **Serum cytokine levels in human septic shock: relation to multiple-system organ failure and mortality.** *Chest* 1993, **103**:565-575.
21. Thérout P, Armstrong PW, Mahaffey KW, Hochman JS, Malloy KJ, Rollins S, Nicolau JC, Lavoie J, Luong TM, Burchenal J, Granger CB: **Prognostic significance of blood markers of inflammation in patients with ST-segment elevation myocardial infarction undergoing primary angioplasty and effects of pexelizumab, a C5 inhibitor: a substudy of the COMMA trial.** *Eur Heart J* 2005, **26**:1964-1970.
22. Shpektor A: **Cardiogenic shock: the role of inflammation.** *Acute Card Care* 2010, **12**:115-118.
23. Finkel MS, Oddis CV, Jacob TD, Watkins SC, Hattler BG, Simmons RL: **Negative inotropic effects of cytokines on the heart mediated by nitric oxide.** *Science* 1992, **257**:387-389.
24. Sinning CR, Sinning JM, Schulz A, Schnabel RB, Lubos E, Wild PS, Papassotiropoulos J, Bergmann A, Blankenberg S, Munzel T, Bickel C, AtheroGene Study Investigators: **Association of serum procalcitonin with cardiovascular prognosis in coronary artery disease.** *Circ J* 2011, **75**:1184-1191.
25. Geppert A, Steiner A, Delle-Karth G, Heinz G, Huber K: **Usefulness of procalcitonin for diagnosing complicating sepsis in patients with cardiogenic shock.** *Intensive Care Med* 2003, **29**:1384-1389.
26. Picariello C, Lazzeri C, Chiostrini M, Gensini G, Valente S: **Procalcitonin in patients with acute coronary syndromes and cardiogenic shock submitted to percutaneous coronary intervention.** *Int Emerg Med* 2009, **4**:403-408.
27. Hasdai D, Holmes DR Jr, Califf RM, Thompson TD, Hochman JS, Pfisterer M, Topol EJ: **Cardiogenic shock complicating acute myocardial infarction: predictors of death.** *Am Heart J* 1999, **138**:21-31.
28. Fincke R, Hochman JS, Lowe AM, Menon V, Slater JN, Webb JG, LeLemtel TH, Cotter G: **Cardiac power is the strongest hemodynamic correlate of mortality in cardiogenic shock: a report from the SHOCK trial registry: SHOCK Investigators.** *J Am Coll Cardiol* 2004, **44**:340-348.
29. Koreny M, Karth GD, Geppert A, Neunteufl T, Priglinger U, Heinz G, Siostrzonek P: **Prognosis of patients who develop acute renal failure during the first 24 hours of cardiogenic shock after myocardial infarction.** *Am J Med* 2002, **112**:115-119.
30. Marenzi G, Assanelli E, Campodonico J, De Metrio M, Lauri G, Marana I, Moltrasio M, Rubino M, Veglia F, Montorsi P, Bartorelli AL: **Acute kidney injury in ST-segment elevation acute myocardial infarction complicated by cardiogenic shock at admission.** *Crit Care Med* 2010, **38**:438-444.

doi:10.1186/cc11467

Cite this article as: Andrié *et al.*: Interleukin-6 is the strongest predictor of 30-day mortality in patients with cardiogenic shock due to myocardial infarction. *Critical Care* 2012 **16**:R152.

**Submit your next manuscript to BioMed Central
and take full advantage of:**

- Convenient online submission
- Thorough peer review
- No space constraints or color figure charges
- Immediate publication on acceptance
- Inclusion in PubMed, CAS, Scopus and Google Scholar
- Research which is freely available for redistribution

Submit your manuscript at
www.biomedcentral.com/submit

